

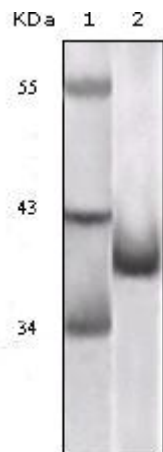


# p14 ARF Monoclonal Antibody

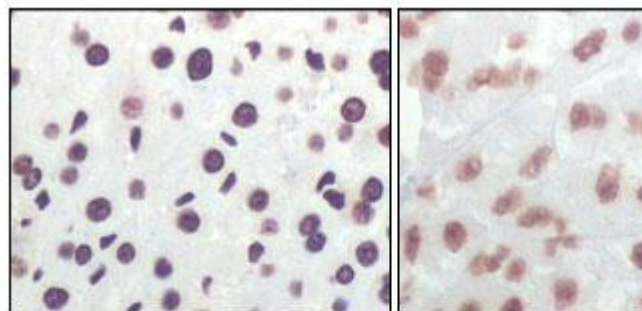
<b>Catalog No</b>	YP-Ab-16561
<b>Isotype</b>	IgG
<b>Reactivity</b>	Human;Mouse;Rat
<b>Applications</b>	WB;IHC;IF;ELISA
<b>Gene Name</b>	CDKN2A
<b>Protein Name</b>	Cyclin-dependent kinase inhibitor 2A isoform 4
<b>Immunogen</b>	Purified recombinant fragment of p16 expressed in E. Coli.
<b>Specificity</b>	p16 Monoclonal Antibody detects endogenous levels of p16 protein.
<b>Formulation</b>	Liquid in PBS containing 50% glycerol, 0.5% BSA and 0.02% sodium azide.
<b>Source</b>	Monoclonal, Mouse
<b>Purification</b>	Affinity purification
<b>Dilution</b>	WB 1:500 - 1:2000. IHC 1:200 - 1:1000. ELISA: 1:10000.. IF 1:50-200
<b>Concentration</b>	1 mg/ml
<b>Purity</b>	≥90%
<b>Storage Stability</b>	-20°C/1 year
<b>Synonyms</b>	CDKN2A;CDKN2;MLM;Cyclin-dependent kinase inhibitor 2A; isoform 4;p14ARF;p19ARF
<b>Molecular weight</b>	14kD
<b>Cell Pathway</b>	Nucleus, nucleolus . Nucleus, nucleoplasm .; [Isoform smARF]: Mitochondrion .
<b>Tissue Specificity</b>	
<b>Function</b>	
<b>Background</b>	
<b>matters needing attention</b>	Avoid repeated freezing and thawing!
<b>Usage suggestions</b>	This product can be used in immunological reaction related experiments. For more information, please consult technical personnel.



## Products Images

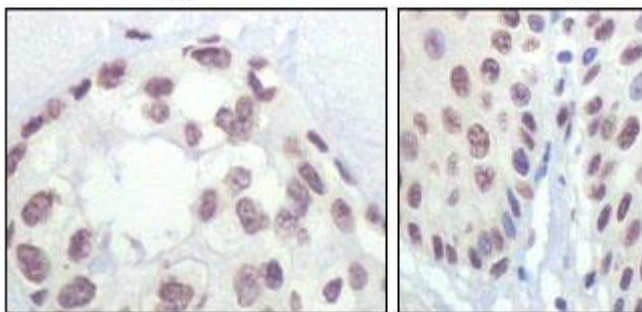


Western Blot analysis using p16 Monoclonal Antibody against truncated p16 recombinant protein.



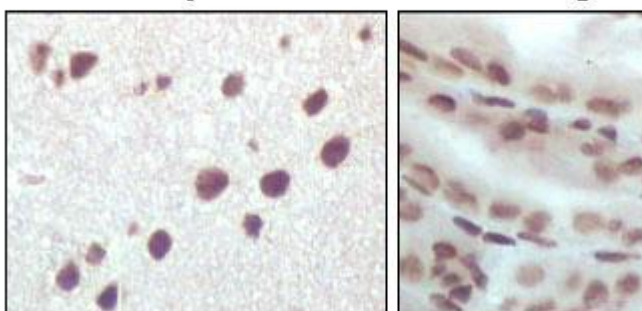
A

B



C

D



E

F

Immunohistochemistry analysis of paraffin-embedded rat liver tissue (A), human brain tumor (B), breast cancer (C), esophageal epithelium tissue (D), mouse brain tissue (E) and stomach tissue (F), showing nuclear localization with DAB staining using p16 Mon



---

---