

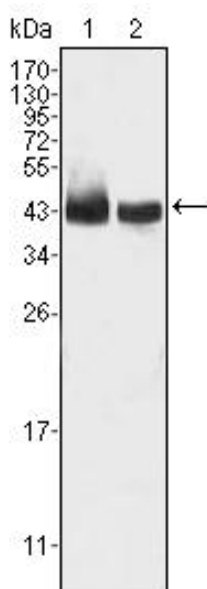


# KLF15 Monoclonal Antibody

|                                  |  |
|----------------------------------|--|
| <b>Catalog No</b>                | YP-mAb-02934   |
| <b>Isotype</b>                   | IgG  |
| <b>Reactivity</b>                | Human;Mouse;Rat  |
| <b>Applications</b>              | WB   |
| <b>Gene Name</b>                 | KLF15  |
| <b>Protein Name</b>              | Krueppel-like factor 15  |
| <b>Immunogen</b>                 | Purified recombinant fragment of human KLF15 expressed in E. Coli.   |
| <b>Specificity</b>               | KLF15 Monoclonal Antibody detects endogenous levels of KLF15 protein.  |
| <b>Formulation</b>               | Ascitic fluid containing 0.03% sodium azide,0.5% BSA, 50%glycerol.   |
| <b>Source</b>                    | Monoclonal, Mouse  |
| <b>Purification</b>              | Affinity purification  |
| <b>Dilution</b>                  | Western Blot: 1/500 - 1/2000.  |
| <b>Concentration</b>             | 1 mg/ml  |
| <b>Purity</b>                    | ≥90%   |
| <b>Storage Stability</b>         | -20°C/1 year   |
| <b>Synonyms</b>                  | KLF15; KKLF; Krueppel-like factor 15; Kidney-enriched krueppel-like factor   |
| <b>Observed Band</b>             | 44kD   |
| <b>Cell Pathway</b>              | Nucleus .  |
| <b>Tissue Specificity</b>        | Highly expressed in liver, skeletal muscle, and kidney. Expressed in cardiomyocytes. Expression is highly reduced in cardiac tissue of patients with non-ischemic cardiomyopathy and aortic aneurysm, and in glomerular disease. Not expressed in bone marrow or lymphoid tissues.   |
| <b>Function</b>                  | function:Transcriptional activator. Binds to the GA element of the CLCNKA promoter.,similarity:Belongs to the Sp1 C2H2-type zinc-finger protein family.,similarity:Contains 3 C2H2-type zinc fingers.,tissue specificity:Highly expressed in liver, followed by heart, skeletal muscle, and kidney. Not expressed in bone marrow or lymphoid tissues., |
| <b>Background</b>                | function:Transcriptional activator. Binds to the GA element of the CLCNKA promoter.,similarity:Belongs to the Sp1 C2H2-type zinc-finger protein family.,similarity:Contains 3 C2H2-type zinc fingers.,tissue specificity:Highly expressed in liver, followed by heart, skeletal muscle, and kidney. Not expressed in bone marrow or lymphoid tissues., |
| <b>matters needing attention</b> | Avoid repeated freezing and thawing!   |

**Usage suggestions**

This product can be used in immunological reaction related experiments. For more information, please consult technical personnel.

**Products Images**

Western Blot analysis using KLF15 Monoclonal Antibody against HepG2 (1) and SMMC-7721 (2) cell lysate.