

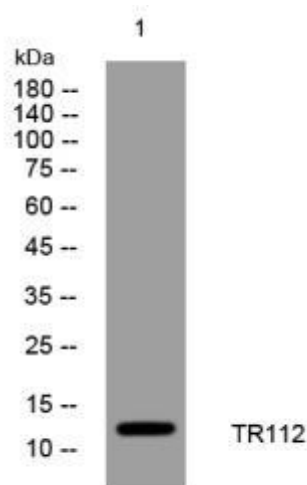


TR112 mouse mAb

Catalog No	YP-mAb-11840
Isotype	IgG
Reactivity	Human;Rat;Mouse;
Applications	WB
Gene Name	TRMT112 AD-001 HSPC152 HSPC170
Protein Name	TR112
Immunogen	Synthesized peptide derived from human TR112 AA range: 65-115
Specificity	This antibody detects endogenous levels of TR112 at Human/Mouse
Formulation	Liquid in PBS containing 50% glycerol, 0.5% BSA and 0.02% sodium azide.
Source	Monoclonal, mouse,IgG
Purification	The antibody was affinity-purified from mouse serum by affinity-chromatography using specific immunogen.
Dilution	WB 1 : 500-2000
Concentration	1 mg/ml
Purity	≥90%
Storage Stability	-20°C/1 year
Calculated Molecular Weight	14kD
Synonyms	
Cell Pathway	Nucleus, nucleoplasm . Cytoplasm, perinuclear region . Localizes to a polarized perinuclear structure, overlapping partially with the Golgi and lysosomes (PubMed:25851604). .
Tissue Specificity	
Function	similarity:Belongs to the TRM112 family.,similarity:Contains 1 TRM112 domain.,
Background	
matters needing attention	Avoid repeated freezing and thawing!
Usage suggestions	This product can be used in immunological reaction related experiments. For more information, please consult technical personnel.



Products Images



Western blot analysis of lysates from SW480 cells,
primary antibody was diluted at 1:1000, 4°over night