

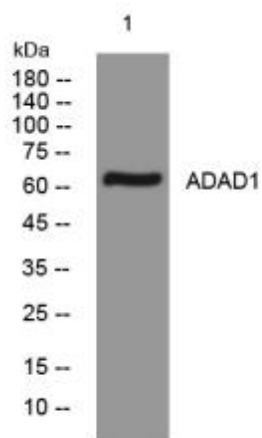


ADAD1 mouse mAb

Catalog No	YP-mAb-11569
Isotype	IgG
Reactivity	Human; Mouse;Rat
Applications	WB
Gene Name	ADAD1 TENR
Protein Name	ADAD1
Immunogen	Synthesized peptide derived from human ADAD1 AA range: 335-385
Specificity	This antibody detects endogenous levels of ADAD1 at Human/Mouse/Rat
Formulation	Liquid in PBS containing 50% glycerol, 0.5% BSA and 0.02% sodium azide.
Source	Monoclonal, mouse,IgG
Purification	The antibody was affinity-purified from mouse serum by affinity-chromatography using specific immunogen.
Dilution	WB 1 : 500-2000
Concentration	1 mg/ml
Purity	≥90%
Storage Stability	-20°C/1 year
Calculated Molecular Weight	63kD
Synonyms	
Cell Pathway	Nucleus .
Tissue Specificity	
Function	function:Plays a role in spermatogenesis. Binds to RNA but not to DNA.,similarity:Belongs to the ADAD family.,similarity:Contains 1 A to I editase domain.,similarity:Contains 1 DRBM (double-stranded RNA-binding) domain.,
Background	
matters needing attention	Avoid repeated freezing and thawing!
Usage suggestions	This product can be used in immunological reaction related experiments. For more information, please consult technical personnel.



Products Images



Western blot analysis of lysates from HeLa cells,
primary antibody was diluted at 1:1000, 4°over night