

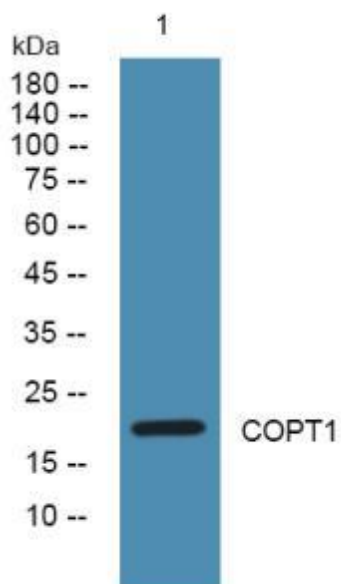


# COPT1 Monoclonal Antibody

<b>Catalog No</b>	YP-mAb-07881
<b>Isotype</b>	IgG
<b>Reactivity</b>	Human;Rat;Mouse;
<b>Applications</b>	WB
<b>Gene Name</b>	SLC31A1 COPT1 CTR1
<b>Protein Name</b>	High affinity copper uptake protein 1 (Copper transporter 1) (hCTR1) (Solute carrier family 31 member 1)
<b>Immunogen</b>	Synthesized peptide derived from part region of human protein
<b>Specificity</b>	COPT1 Monoclonal Antibody detects endogenous levels of protein.
<b>Formulation</b>	Liquid in PBS containing 50% glycerol, and 0.02% sodium azide.
<b>Source</b>	Monoclonal, mouse,IgG
<b>Purification</b>	The antibody was affinity-purified from mouse antiserum by affinity-chromatography using epitope-specific immunogen.
<b>Dilution</b>	WB 1:500-2000
<b>Concentration</b>	1 mg/ml
<b>Purity</b>	≥90%
<b>Storage Stability</b>	-20°C/1 year
<b>Synonyms</b>	
<b>Observed Band</b>	20kD
<b>Cell Pathway</b>	Cell membrane; Multi-pass membrane protein. Localizes to the apical membrane in intestinal epithelial cells. .
<b>Tissue Specificity</b>	Brain,Liver,Lung,Skeletal muscle,Skin,
<b>Function</b>	function:Involved in high-affinity copper uptake.,PTM:O-Glycosylation at Thr-27 protects from proteolytic cleavage in the N-terminal extracellular domain.,similarity:Belongs to the SLC31A transporter family.,subunit:Homotrimer.,
<b>Background</b>	The protein encoded by this gene is a high-affinity copper transporter found in the cell membrane. The encoded protein functions as a homotrimer to effect the uptake of dietary copper. [provided by RefSeq, Aug 2011],
<b>matters needing attention</b>	Avoid repeated freezing and thawing!
<b>Usage suggestions</b>	This product can be used in immunological reaction related experiments. For more information, please consult technical personnel.



## Products Images



Western blot analysis of lysates from PC12 cells,  
primary antibody was diluted at 1:1000, 4°over night