



# CCHCR mouse mAb

|                                    |  |
|------------------------------------|--|
| <b>Catalog No</b>                  | YP-mAb-11065   |
| <b>Isotype</b>                     | IgG  |
| <b>Reactivity</b>                  | Human; Mouse;Rat   |
| <b>Applications</b>                | WB   |
| <b>Gene Name</b>                   | CCHCR1 C6orf18 HCR   |
| <b>Protein Name</b>                | CCHCR  |
| <b>Immunogen</b>                   | Synthesized peptide derived from human CCHCR AA range: 180-230   |
| <b>Specificity</b>                 | This antibody detects endogenous levels of CCHCR at Human/Mouse  |
| <b>Formulation</b>                 | Liquid in PBS containing 50% glycerol, 0.5% BSA and 0.02% sodium azide.  |
| <b>Source</b>                      | Monoclonal, mouse,IgG  |
| <b>Purification</b>                | The antibody was affinity-purified from mouse serum by affinity-chromatography using specific immunogen.   |
| <b>Dilution</b>                    | WB 1: 500-2000   |
| <b>Concentration</b>               | 1 mg/ml  |
| <b>Purity</b>                      | ≥90%   |
| <b>Storage Stability</b>           | -20°C/1 year   |
| <b>Calculated Molecular Weight</b> | 86kD   |
| <b>Observed Band</b>               |  |
| <b>Cell Pathway</b>                | Cytoplasm. Nucleus.  |
| <b>Tissue Specificity</b>          | Found in all tissues tested, abundantly expressed in heart, liver, skeletal muscle, kidney and pancreas, and to a lesser extent in lung and placenta. Overexpressed in keratinocytes of psoriatic lesions.   |
| <b>Function</b>                    | function:May be a regulator of keratinocyte proliferation or differentiation.,polymorphism:HCR*WWCC is associated with susceptibility to psoriasis. Psoriasis is a chronic inflammatory dermatosis that affects approximately 2% of the population. It is a multifactorial disease characterized by red, scaly skin lesions that are usually found on the scalp, elbows, and knees, and may be associated with severe arthritis. The lesions are caused by hyperproliferative keratinocytes and infiltration of inflammatory cells into the dermis and epidermis. The usual age of onset of psoriasis is between 15 and 30 years, although it can present at any age. Association of HCR with psoriasis seem to be due to linkage disequilibrium with CW*0602 (PubMed:11348465). HCR is unlikely to be directly involved in psoriasis development.,tissue specificity:Found in all tissues tested, abundantly expressed in heart, li |
| <b>Background</b>                  |  |

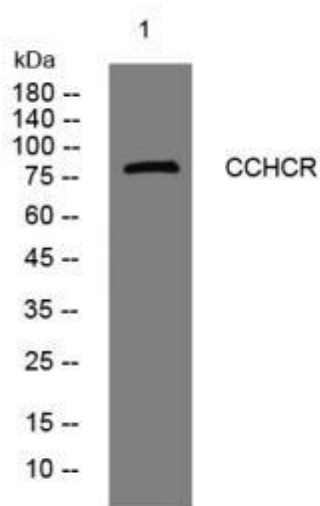
**matters needing attention**

Avoid repeated freezing and thawing!

**Usage suggestions**

This product can be used in immunological reaction related experiments. For more information, please consult technical personnel.

## Products Images



Western blot analysis of lysates from K562 cells, primary antibody was diluted at 1:1000, 4°over night