

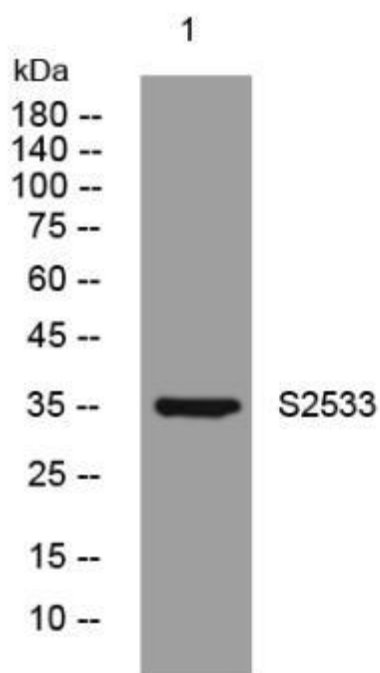


S2533 mouse mAb

Catalog No	YP-mAb-08470
Isotype	IgG
Reactivity	Human;Rat;Mouse;
Applications	WB
Gene Name	SLC25A33
Protein Name	S2533
Immunogen	Synthesized peptide derived from human S2533 AA range: 209-259
Specificity	This antibody detects endogenous levels of S2533 at Human/Mouse
Formulation	Liquid in PBS containing 50% glycerol, 0.5% BSA and 0.02% sodium azide.
Source	Monoclonal, mouse,IgG
Purification	The antibody was affinity-purified from mouse serum by affinity-chromatography using specific immunogen.
Dilution	WB 1 : 500-2000
Concentration	1 mg/ml
Purity	≥90%
Storage Stability	-20°C/1 year
Observed Band	
Calculated Molecular Weight	35kD
Cell Pathway	Mitochondrion inner membrane ; Multi-pass membrane protein .
Tissue Specificity	Expressed in the central nervous system. Also expressed in testis and skeletal muscle. Weakly expressed in heart, liver, kidney, prostate, colon and peripheral blood leukocytes.
Function	function:Probable mitochondrial transporter which participates in dendritic cell endocytosis. May associate with mitochondrial oxidative phosphorylation.,similarity:Belongs to the mitochondrial carrier family.,similarity:Contains 3 Solc̄ar repeats.,tissue specificity:Expressed in the central nervous system. Also expressed in testis and skeletal muscle. Weakly expressed in heart, liver, kidney, prostate, colon and peripheral blood leukocytes.,
Background	SLC25A33 belongs to the SLC25 family of mitochondrial carrier proteins (Haitina et al., 2006 [PubMed 16949250]).[supplied by OMIM, Mar 2008],
matters needing attention	Avoid repeated freezing and thawing!

Usage suggestions

This product can be used in immunological reaction related experiments. For more information, please consult technical personnel.

Products Images

Western blot analysis of lysates from KB cells, primary antibody was diluted at 1:1000, 4° over night