



MLXPL rabbit pAb

| | |
|------------------------------------|--|
| Catalog No | YP-Ab-11432 |
| Isotype | IgG |
| Reactivity | Human; Mouse; Rat |
| Applications | WB; ELISA; IHC |
| Gene Name | MLXIPL BHLHD14 MIO WBSCR14 |
| Protein Name | MLXPL |
| Immunogen | Synthesized peptide derived from human MLXPL AA range: 303-353 |
| Specificity | This antibody detects endogenous levels of MLXPL at Human/Mouse/Rat |
| Formulation | Liquid in PBS containing 50% glycerol, 0.5% BSA and 0.02% sodium azide. |
| Source | Polyclonal, Rabbit, IgG |
| Purification | The antibody was affinity-purified from rabbit serum by affinity-chromatography using specific immunogen. |
| Dilution | WB 1:500-2000; IHC-p 1:50-300; ELISA 2000-20000 |
| Concentration | 1 mg/ml |
| Purity | ≥90% |
| Storage Stability | -20°C/1 year |
| Synonyms | |
| Calculated Molecular Weight | 94kD |
| Cell Pathway | Nucleus. |
| Tissue Specificity | Expressed in liver, heart, kidney, cerebellum and intestinal tissues. |
| Function | disease: Haploinsufficiency of WBSCR14 may be the cause of certain cardiovascular and musculo-skeletal abnormalities observed in Williams-Beuren syndrome (WBS) [MIM:194050]. WBS is a rare developmental disorder. It is a contiguous gene deletion syndrome involving genes from chromosome band 7q11.23., function: Transcriptional repressor. Binds to the canonical and non-canonical E box sequences 5'-CACGTG-3', similarity: Contains 1 basic helix-loop-helix (bHLH) domain., subunit: Binds DNA as a heterodimer with TCFL4/MLX., tissue specificity: Expressed in liver, heart, kidney, cerebellum and intestinal tissues., |
| Background | This gene encodes a basic helix-loop-helix leucine zipper transcription factor of the Myc/Max/Mad superfamily. This protein forms a heterodimeric complex and binds and activates, in a glucose-dependent manner, carbohydrate response element (ChoRE) motifs in the promoters of triglyceride synthesis genes. The gene is deleted in Williams-Beuren syndrome, a multisystem developmental disorder caused by the deletion of contiguous genes at chromosome 7q11.23. Alternative splicing results in multiple transcript variants. [provided by RefSeq, |



Dec 2015],

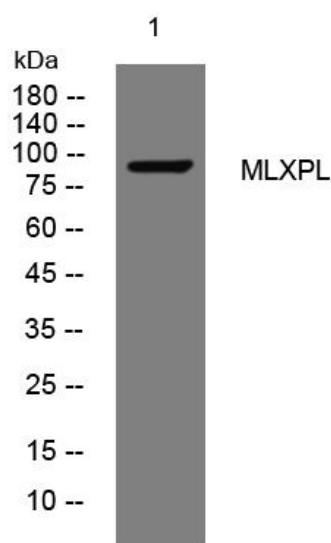
matters needing attention

Avoid repeated freezing and thawing!

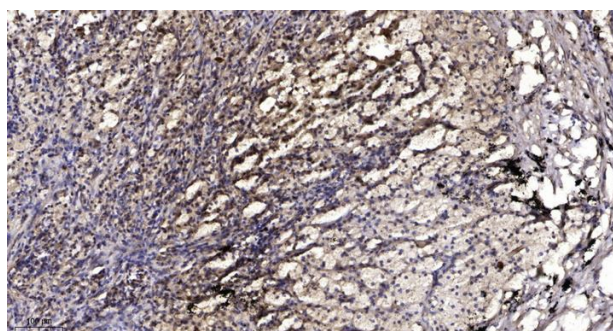
Usage suggestions

This product can be used in immunological reaction related experiments. For more information, please consult technical personnel.

Products Images



Western blot analysis of lysates from Hela cells, primary antibody was diluted at 1:1000, 4° over night



Immunohistochemical analysis of paraffin-embedded human Squamous cell carcinoma of lung. 1, Antibody was diluted at 1:200(4° overnight). 2, Tris-EDTA, pH9.0 was used for antigen retrieval. 3, Secondary antibody was diluted at 1:200(room temperature, 45min).