

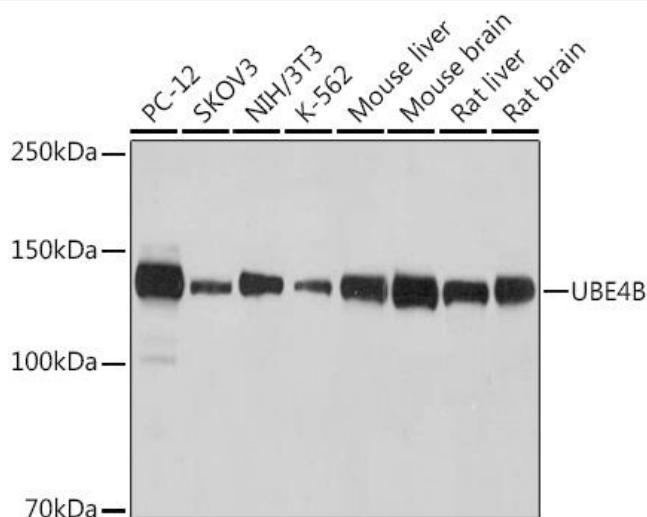


UBE4B Mouse mAb

Catalog No	YP-mAb-19017
Isotype	IgG
Reactivity	Human,Mouse,Rat
Applications	WB
Gene Name	
Protein Name	
Immunogen	Synthetic peptide. This information is considered to be commercially sensitive.
Specificity	
Formulation	
Source	Monoclonal,Mouse,IgG
Purification	Affinity purification
Dilution	WB 1:500-2000
Concentration	1 mg/ml
Purity	≥90%
Storage Stability	-20°C/1 year
Synonyms	E4; UFD2; HDNB1; UBOX3; UFD2A; UBE4B
Observed Band	146kDa
Calculated Molecular Weight	146kDa
Cell Pathway	
Tissue Specificity	
Function	
Background	The modification of proteins with ubiquitin is an important cellular mechanism for targeting abnormal or short-lived proteins for degradation. Ubiquitination involves at least three classes of enzymes: ubiquitin-activating enzymes, or E1s, ubiquitin-conjugating enzymes, or E2s, and ubiquitin-protein ligases, or E3s. This gene encodes an additional conjugation factor, E4, which is involved in multiubiquitin chain assembly. This gene is also the strongest candidate in the neuroblastoma tumor suppressor genes. Alternatively spliced transcript variants encoding distinct isoforms have been found for this gene
matters needing attention	Avoid repeated freezing and thawing!

**Usage suggestions**

This product can be used in immunological reaction related experiments. For more information, please consult technical personnel.

Products Images

Western blot analysis of various lysates using UBE4B Mouse mAb (A0419) at 1:1000 dilution. Secondary antibody: HRP-conjugated Goat anti-Mouse IgG (H+L) (AS014) at 1:10000 dilution. Lysates/proteins: 25μg per lane. Blocking buffer: 3% nonfat dry milk in TBST. Detection: ECL Basic Kit (RM00020). Exposure time: 60s.