



CDIPT rabbit pAb

Catalog No	YP-Ab-11443
Isotype	IgG
Reactivity	Human; Mouse; Rat
Applications	WB
Gene Name	CDIPT PIS PIS1
Protein Name	CDIPT
Immunogen	Synthesized peptide derived from human CDIPT AA range: 128-178
Specificity	This antibody detects endogenous levels of CDIPT at Human/Mouse/Rat
Formulation	Liquid in PBS containing 50% glycerol, 0.5% BSA and 0.02% sodium azide.
Source	Polyclonal, Rabbit, IgG
Purification	The antibody was affinity-purified from rabbit serum by affinity-chromatography using specific immunogen.
Dilution	WB 1: 500-2000
Concentration	1 mg/ml
Purity	≥90%
Storage Stability	-20°C/1 year
Synonyms	
Calculated Molecular Weight	23kD
Cell Pathway	Endoplasmic reticulum membrane ; Multi-pass membrane protein . Cell membrane ; Multi-pass membrane protein .
Tissue Specificity	Detected in placenta (at protein level). Widely expressed. Higher expression in adult liver and skeletal muscle, slightly lower levels seen in pancreas, kidney, lung, placenta, brain, heart, leukocyte, colon, small intestine, ovary, testis, prostate, thymus and spleen. In fetus, expressed in kidney, liver, lung and brain.
Function	catalytic activity: CDP-diacylglycerol + myo-inositol = CMP + phosphatidyl-1D-myo-inositol., cofactor: Magnesium., cofactor: Manganese., function: Catalyzes the biosynthesis of phosphatidylinositol (PtdIns) as well as PtdIns:inositol exchange reaction. May thus act to reduce an excessive cellular PtdIns content. The exchange activity is due to the reverse reaction of PtdIns synthase and is dependent on CMP, which is tightly bound to the enzyme., induction: Inhibited by PtdIns (product inhibition), phosphatidylinositol phosphate, and nucleoside di- and tri-phosphates., similarity: Belongs to the CDP-alcohol phosphatidyltransferase class-I family., tissue specificity: Widely expressed. Higher expression in adult liver and skeletal muscle, slightly lower levels seen in pancreas, kidney, lung, placenta, brain, heart, leukocyte, colon, small intestine, ovary, testis, prostate, thymus and spleen. In fetus,



Background

Phosphatidylinositol breakdown products are ubiquitous second messengers that function downstream of many G protein-coupled receptors and tyrosine kinases regulating cell growth, calcium metabolism, and protein kinase C activity. Two enzymes, CDP-diacylglycerol synthase and phosphatidylinositol synthase, are involved in the biosynthesis of phosphatidylinositol. Phosphatidylinositol synthase, a member of the CDP-alcohol phosphatidyl transferase class-I family, is an integral membrane protein found on the cytoplasmic side of the endoplasmic reticulum and the Golgi apparatus. Several transcript variants encoding different isoforms have been found for this gene. [provided by RefSeq, Nov 2013],

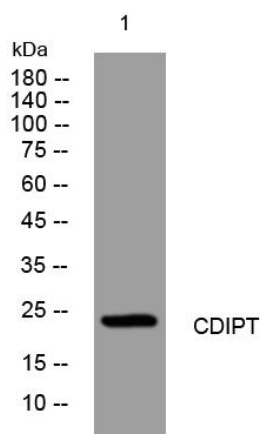
matters needing attention

Avoid repeated freezing and thawing!

Usage suggestions

This product can be used in immunological reaction related experiments. For more information, please consult technical personnel.

Products Images



Western blot analysis of lysates from THP-1 cells, primary antibody was diluted at 1:1000, 4° over night