

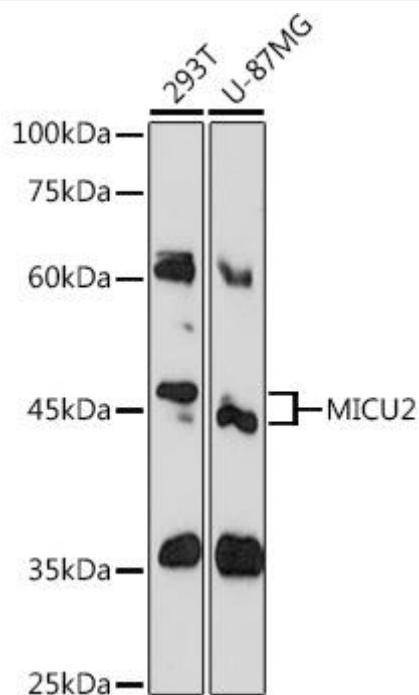


# MICU2 Mouse mAb

Catalog No	YP-mAb-18592
Isotype	IgG
Reactivity	Human,Mouse,Rat
Applications	WB
Gene Name	
Protein Name	
Immunogen	A synthetic peptide corresponding to a sequence within amino acids 200-300 of human MICU2 (NP_689939.1).
Specificity	
Formulation	
Source	
Purification	Affinity purification
Dilution	WB 1:500-2000
Concentration	1 mg/ml
Purity	≥90%
Storage Stability	-20°C/1 year
Synonyms	EFHA1; 1110008L20Rik; MICU2
Observed Band	45kDa
Cell Pathway	
Tissue Specificity	
Function	
Background	Enables protein heterodimerization activity. Involved in calcium import into the mitochondrion and negative regulation of mitochondrial calcium ion concentration. Located in mitochondrial inner membrane and mitochondrial intermembrane space. Part of uniplex complex.
matters needing attention	Avoid repeated freezing and thawing!
Usage suggestions	This product can be used in immunological reaction related experiments. For more information, please consult technical personnel.



## Products Images



Western blot analysis of various lysates using MICU2 Mouse pAb (A12198) at 1:1000 dilution. Secondary antibody: HRP-conjugated Goat anti-Mouse IgG (H+L) (AS014) at 1:10000 dilution. Lysates/proteins: 25μ g per lane. Blocking buffer: 3% nonfat dry milk in TBST. Detection: ECL Basic Kit (RM00020). Exposure time: 60s.