

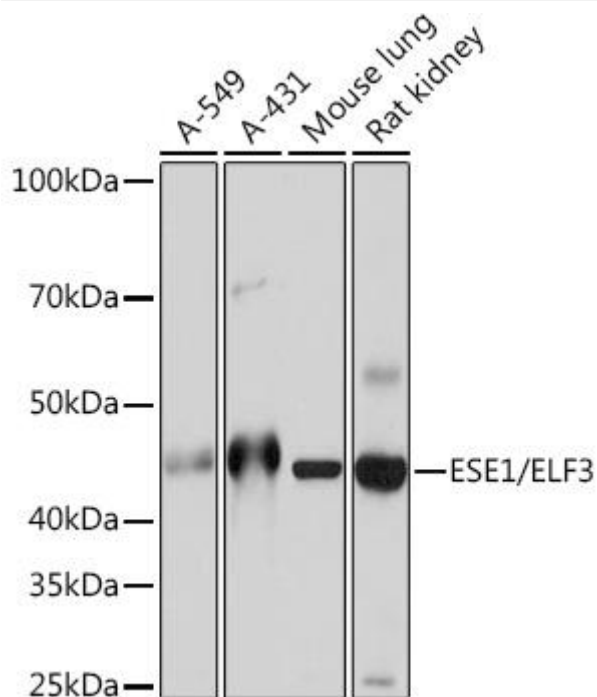


# ESE1/ELF3 Mouse mAb

Catalog No	YP-mAb-18733
Isotype	IgG
Reactivity	Human,Mouse,Rat
Applications	WB
Gene Name	
Protein Name	
Immunogen	Recombinant fusion protein containing a sequence corresponding to amino acids 1-371 of human ESE1/ELF3 (P78545)
Specificity	
Formulation	
Source	
Purification	Affinity purification
Dilution	WB 1:500-2000
Concentration	1 mg/ml
Purity	≥90%
Storage Stability	-20°C/1 year
Synonyms	ERT; ESX; EPR-1; ESE-1; ESE1/ELF3
Observed Band	42kDa
Cell Pathway	
Tissue Specificity	
Function	
Background	Enables DNA-binding transcription activator activity, RNA polymerase II-specific and sequence-specific double-stranded DNA binding activity. Involved in inflammatory response; negative regulation of transcription, DNA-templated; and positive regulation of transcription by RNA polymerase II. Located in Golgi apparatus; cytosol; and nucleoplasm
matters needing attention	Avoid repeated freezing and thawing!
Usage suggestions	This product can be used in immunological reaction related experiments. For more information, please consult technical personnel.



## Products Images



Western blot analysis of various lysates using ESE1/ELF3 Mouse mAb (A5236) at 1:1000 dilution. Secondary antibody: HRP-conjugated Goat anti-Mouse IgG (H+L) (AS014) at 1:10000 dilution. Lysates/proteins: 25μ g per lane. Blocking buffer: 3% nonfat dry milk in TBST. Detection: ECL Basic Kit (RM00020). Exposure time: 10s