

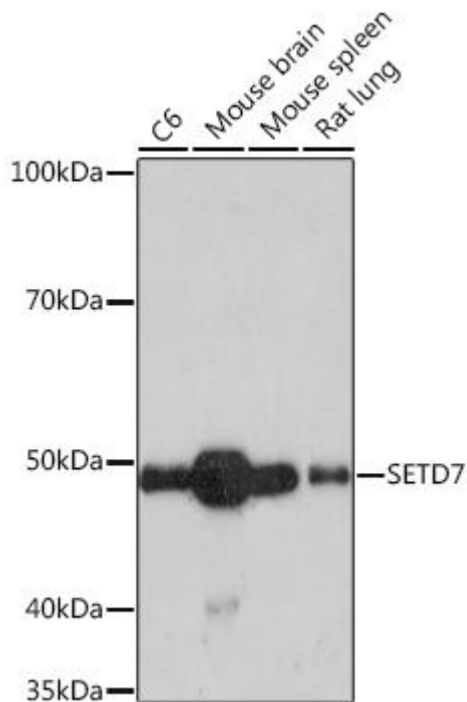


# SETD7 Mouse mAb

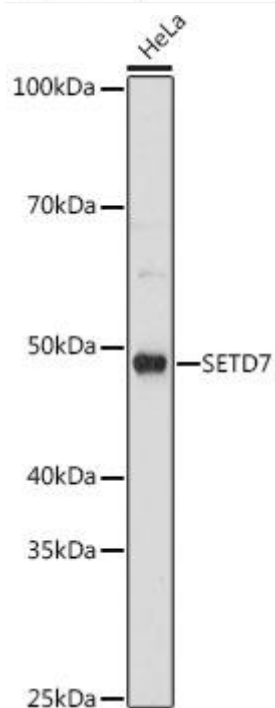
Catalog No	YP-mAb-18731
Isotype	IgG
Reactivity	Human,Mouse,Rat
Applications	WB
Gene Name	
Protein Name	
Immunogen	A synthetic peptide corresponding to a sequence within amino acids 1-100 of human SETD7 (Q8WTS6)
Specificity	
Formulation	
Source	
Purification	Affinity purification
Dilution	WB 1:500-2000
Concentration	1 mg/ml
Purity	≥90%
Storage Stability	-20°C/1 year
Synonyms	KMT7; SET7; SET9; SET7/9; SETD7
Observed Band	48kDa
Cell Pathway	
Tissue Specificity	
Function	Enables histone-lysine N-methyltransferase activity and p53 binding activity. Involved in peptidyl-lysine dimethylation and peptidyl-lysine monomethylation. Acts upstream of or within cellular response to DNA damage stimulus and heterochromatin organization. Located in chromosome and nucleolus.
Background	
matters needing attention	Avoid repeated freezing and thawing!
Usage suggestions	This product can be used in immunological reaction related experiments. For more information, please consult technical personnel.



## Products Images



Western blot analysis of various lysates using SETD7 Mouse mAb (A9225) at 1:1000 dilution. Secondary antibody: HRP Goat Anti-Mouse IgG (H+L) (AS014) at 1:10000 dilution. Lysates/proteins: 25μ g per lane. Blocking buffer: 3% nonfat dry milk in TBST. Detection: ECL Enhanced Kit (RM00021). Exposure time: 3min



Western blot analysis of lysates from HeLa cells, using SETD7 Mouse mAb (A9225) at 1:1000 dilution. Secondary antibody: HRP Goat Anti-Mouse IgG (H+L) (AS014) at 1:10000 dilution. Lysates/proteins: 25μ g per lane. Blocking buffer: 3% nonfat dry milk in TBST. Detection: ECL Basic Kit (RM00020). Exposure time: 180s.