

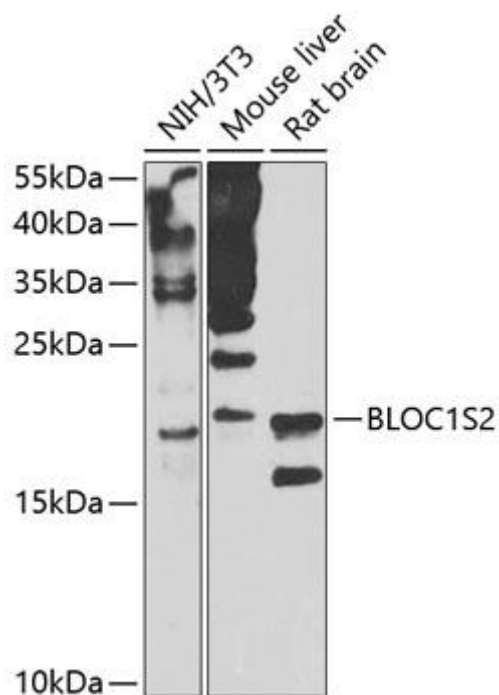


BLOC1S2 Mouse mAb

| | |
|----------------------------------|--|
| Catalog No | YP-mAb-18612 |
| Isotype | IgG |
| Reactivity | Human;Rat;Mouse; |
| Applications | WB |
| Gene Name | |
| Protein Name | |
| Immunogen | Recombinant fusion protein containing a sequence corresponding to amino acids 44-142 of human BLOC1S2 (NP_776170.2) |
| Specificity | |
| Formulation | |
| Source | |
| Purification | Affinity purification |
| Dilution | WB 1:500 - 1:2000 |
| Concentration | 1 mg/ml |
| Purity | ≥90% |
| Storage Stability | -20°C/1 year |
| Synonyms | CEAP; BLOS2; BORCS2; CEAP11; BLOC1S2 |
| Observed Band | 16kDa |
| Cell Pathway | |
| Tissue Specificity | |
| Function | |
| Background | This gene encodes a protein with multiple functions. The encoded protein has been found in association with the centrosome, shown to co-localize with gamma-tubulin, and also found to be one of the proteins in the BLOC-1 complex which functions in the formation of lysosome related organelles. A pseudogene of this gene is located on the X chromosome. Alternative splicing results in multiple transcript variants. |
| matters needing attention | Avoid repeated freezing and thawing! |
| Usage suggestions | This product can be used in immunological reaction related experiments. For more information, please consult technical personnel. |



Products Images



Western blot analysis of extracts of various cell lines, using BLOC1S2 antibody (A8007) at 1:1000 dilution. Secondary antibody: HRP Goat Anti-Mouse IgG (H+L) (AS014) at 1:10000 dilution. Lysates/proteins: 25μg per lane. Blocking buffer: 3% nonfat dry milk in TBST. Detection: ECL Enhanced Kit (RM00021). Exposure time: 30s.