

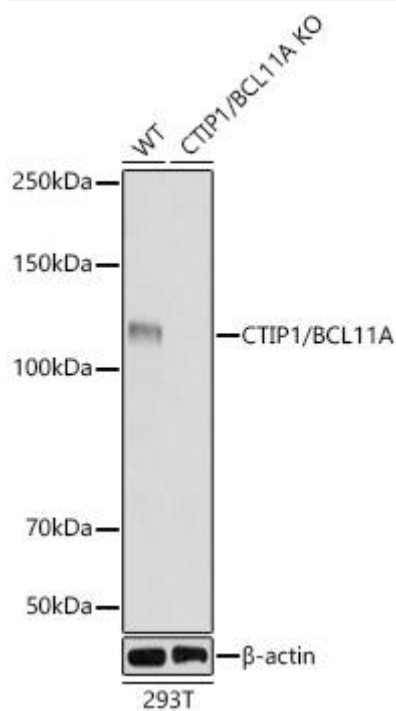


CTIP1/BCL11A Mouse mAb

Catalog No	YP-mAb-18533
Isotype	IgG
Reactivity	Human, Mouse, Rat
Applications	WB
Gene Name	
Protein Name	
Immunogen	Recombinant fusion protein containing a sequence corresponding to amino acids 401-589 of human CTIP1/BCL11A (Q9H165).
Specificity	
Formulation	
Source	
Purification	Affinity purification
Dilution	WB 1:500 - 1:1000
Concentration	1 mg/ml
Purity	≥90%
Storage Stability	-20°C/1 year
Synonyms	EVI9; CTIP1; DILOS; ZNF856; HBFQTL5; SMARCM1; 1A
Observed Band	120kDa
Cell Pathway	
Tissue Specificity	
Function	
Background	This gene encodes a C2H2 type zinc-finger protein by its similarity to the mouse Bcl11a/Evi9 protein. The corresponding mouse gene is a common site of retroviral integration in myeloid leukemia, and may function as a leukemia disease gene, in part, through its interaction with BCL6. During hematopoietic cell differentiation, this gene is down-regulated. It is possibly involved in lymphoma pathogenesis since translocations associated with B-cell malignancies also deregulates its expression. Multiple transcript variants encoding several different isoforms have been found for this gene.
matters needing attention	Avoid repeated freezing and thawing!

**Usage suggestions**

This product can be used in immunological reaction related experiments. For more information, please consult technical personnel.

Products Images

Western blot analysis of lysates from wild type(WT) and CTIP1/BCL11A knockout (KO) 293T(KO) cells, using CTIP1/BCL11A Mouse mAb (A9231) at 1:1000 dilution. Secondary antibody: HRP Goat Anti-Mouse IgG (H+L) (AS014) at 1:10000 dilution. Lysates/proteins: 25 μ g per lane. Blocking buffer: 3% nonfat dry milk in TBST. Detection: ECL Basic Kit (RM00020). Exposure time: 3s.