

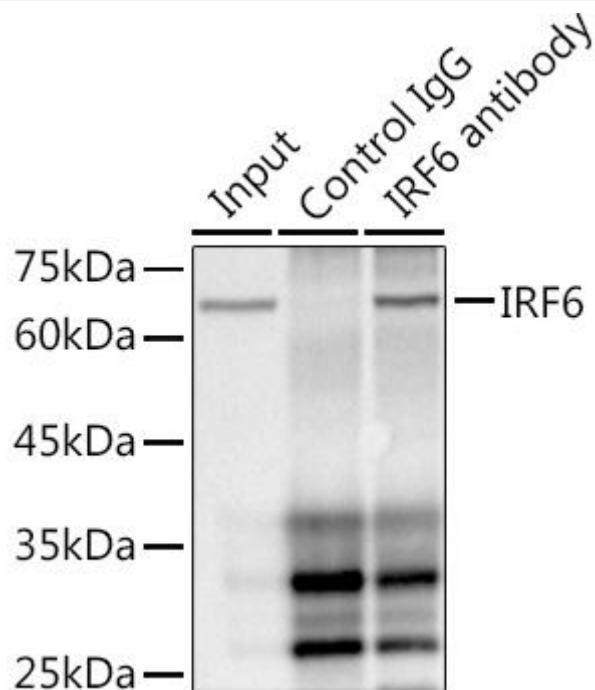


IRF6 Mouse mAb

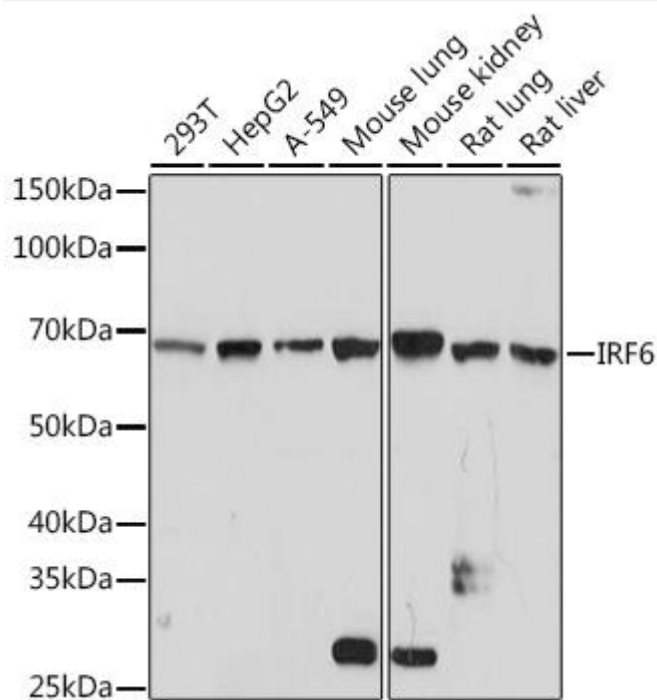
Catalog No	YP-mAb-18531
Isotype	IgG
Reactivity	Human, Mouse, Rat
Applications	WB
Gene Name	
Protein Name	
Immunogen	A synthetic peptide corresponding to a sequence within amino acids 368-467 of human IRF6 (O14896)
Specificity	
Formulation	
Source	
Purification	Affinity purification
Dilution	WB 1:500 - 1:1000
Concentration	1 mg/ml
Purity	≥90%
Storage Stability	-20°C/1 year
Synonyms	LPS; PIT; PPS; VWS; OFC6; PPS1; VWS1; IRF6
Observed Band	68kDa
Cell Pathway	
Tissue Specificity	
Function	
Background	This gene encodes a member of the interferon regulatory transcription factor (IRF) family. Family members share a highly-conserved N-terminal helix-turn-helix DNA-binding domain and a less conserved C-terminal protein-binding domain. The encoded protein may be a transcriptional activator. Mutations in this gene can cause van der Woude syndrome and popliteal pterygium syndrome. Mutations in this gene are also associated with non syndromic orofacial cleft type 6. Alternate splicing results in multiple transcript variants
matters needing attention	Avoid repeated freezing and thawing!
Usage suggestions	This product can be used in immunological reaction related experiments. For more information, please consult technical personnel.



Products Images



Immunoprecipitation analysis of 300 μ g extracts of HepG2 cells using 3 μ g IRF6 antibody (A3209). Western blot was performed from the immunoprecipitate using IRF6 antibody (A3209) at a dilution of 1:1000



Western blot analysis of various lysates using IRF6 Mouse mAb (A3209) at 1:1000 dilution.

Secondary antibody: HRP Goat Anti-Mouse IgG (H+L) (AS014) at 1:10000 dilution.

Lysates/proteins: 25 μ g per lane.

Blocking buffer: 3% nonfat dry milk in TBST.

Detection: ECL Basic Kit (RM00020).

Exposure time: 3min.