



# CTCF Monoclonal Antibody

Catalog No	YP-mAb-00964
Isotype	IgG
Reactivity	Human, Mouse, Rat
Applications	WB
Gene Name	
Protein Name	
Immunogen	A synthetic peptide corresponding to a sequence within amino acids 628-727 of human CTCF (P49711).
Specificity	
Formulation	
Source	Monoclonal, Mouse, IgG
Purification	Affinity purification
Dilution	WB 1:1000 - 1:4000
Concentration	1 mg/ml
Purity	≥90%
Storage Stability	-20°C/1 year
Synonyms	MRD21; FAP108; CFAP108; CTCF
Observed Band	140kDa
Cell Pathway	
Tissue Specificity	
Function	
Background	This gene is a member of the BORIS + CTCF gene family and encodes a transcriptional regulator protein with 11 highly conserved zinc finger (ZF) domains. This nuclear protein is able to use different combinations of the ZF domains to bind different DNA target sequences and proteins. Depending upon the context of the site, the protein can bind a histone acetyltransferase (HAT)-containing complex and function as a transcriptional activator or bind a histone deacetylase (HDAC)-containing complex and function as a transcriptional repressor. If the protein is bound to a transcriptional insulator element, it can block communication between enhancers and upstream promoters, thereby regulating imprinted expression. Mutations in this gene have been associated with invasive breast cancers, prostate cancers, and Wilms' tumors. Alternatively spliced transcript variants encoding different isoforms have been found for this gene.



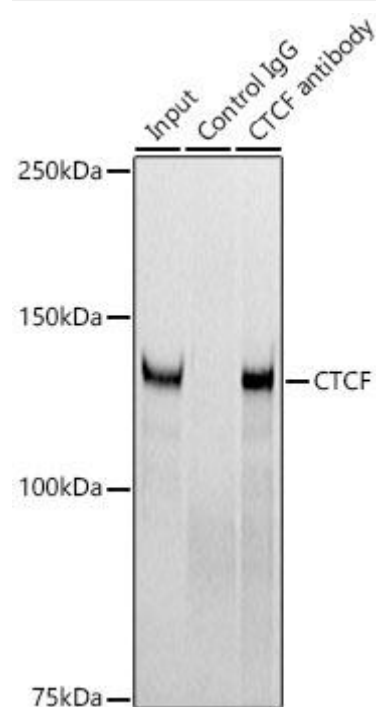
### matters needing attention

Avoid repeated freezing and thawing!

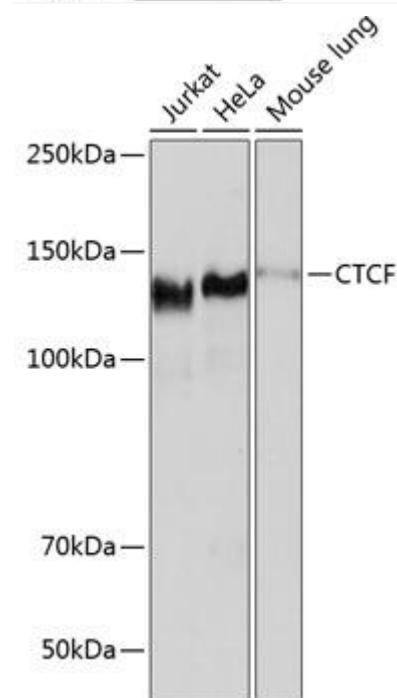
### Usage suggestions

This product can be used in immunological reaction related experiments. For more information, please consult technical personnel.

## Products Images



Immunoprecipitation analysis of 300  $\mu$ g extracts of 293T cells using 3  $\mu$ g CTCF antibody (A19588). Western blot was performed from the immunoprecipitate using CTCF antibody (A19588) at a dilution of 1:1000.



Western blot analysis of various lysates using CTCF Mouse mAb (A19588) at 1:1000 dilution. Secondary antibody: HRP-conjugated Goat anti-Mouse IgG (H+L) (AS014) at 1:10000 dilution. Lysates/proteins: 25  $\mu$ g per lane. Blocking buffer: 3% nonfat dry milk in TBST. Detection: ECL Basic Kit (RM00020). Exposure time: 30s.