

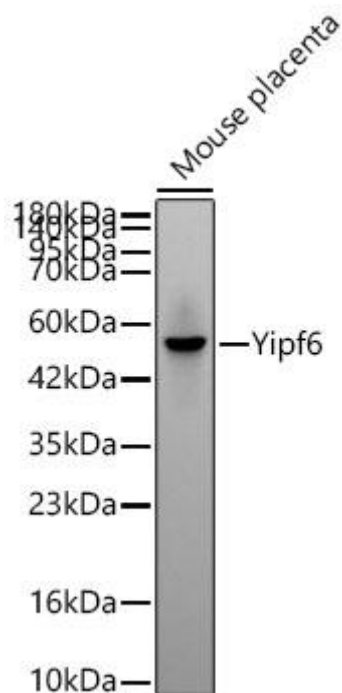


Yipf6 Mouse mAb

Catalog No	YP-mAb-18504
Isotype	IgG
Reactivity	Human,Mouse,Rat
Applications	WB
Gene Name	
Protein Name	
Immunogen	Recombinant fusion protein containing a sequence corresponding to amino acids 1-83 of mouse Yipf6 (NP_997516.1).
Specificity	
Formulation	
Source	
Purification	Affinity purification
Dilution	WB 1:1000 - 1:2000
Concentration	1 mg/ml
Purity	≥90%
Storage Stability	-20°C/1 year
Synonyms	A430107J06Rik
Observed Band	50kDa
Cell Pathway	
Tissue Specificity	
Function	Enables identical protein binding activity. Acts upstream of or within intestinal epithelial cell development. Located in COPII-coated ER to Golgi transport vesicle; cis-Golgi network; and trans-Golgi network. Orthologous to human YIPF6 (Yip1 domain family member 6)
Background	
matters needing attention	Avoid repeated freezing and thawing!
Usage suggestions	This product can be used in immunological reaction related experiments. For more information, please consult technical personnel.



Products Images



Western blot analysis of lysates from Mouse placenta using Yipf6 Mouse mAb (A25920) at 1:1000 dilution incubated overnight at 4°C. Secondary antibody: HRP-conjugated Goat anti-Mouse IgG (H+L) (AS014) at 1:10000 dilution. Lysates/proteins: 25 µg per lane. Blocking buffer: 3% nonfat dry milk in TBST. Detection: ECL Basic Kit (RM00020). Exposure time: 90s.