



# NDUFC2 Monoclonal Antibody

<b>Catalog No</b>	YP-mAb-02706
<b>Isotype</b>	IgG
<b>Reactivity</b>	Human;Rat;Mouse;
<b>Applications</b>	WB
<b>Gene Name</b>	NDUFC2
<b>Protein Name</b>	NADH dehydrogenase [ubiquinone] 1 subunit C2
<b>Immunogen</b>	The antiserum was produced against synthesized peptide derived from human NDUC2. AA range:51-100
<b>Specificity</b>	NDUFC2 Polyclonal Antibody detects endogenous levels of NDUFC2 protein.
<b>Formulation</b>	Liquid in PBS containing 50% glycerol, 0.5% BSA and 0.02% sodium azide.
<b>Source</b>	Monoclonal, Mouse,IgG
<b>Purification</b>	The antibody was affinity-purified from mouse antiserum by affinity-chromatography using epitope-specific immunogen.
<b>Dilution</b>	IHC: 1/100 - 1/300. ELISA: 1/10000.. IF 1:50-200
<b>Concentration</b>	1 mg/ml
<b>Purity</b>	≥90%
<b>Storage Stability</b>	-20°C/1 year
<b>Synonyms</b>	NDUFC2; HLC1; NADH dehydrogenase [ubiquinone] 1 subunit C2; Complex I-B14.5b; CI-B14.5b; Human lung cancer oncogene 1 protein; HLC-1; NADH-ubiquinone oxidoreductase subunit B14.5b
<b>Observed Band</b>	14kDa
<b>Cell Pathway</b>	Mitochondrion inner membrane ; Single-pass membrane protein ; Matrix side .
<b>Tissue Specificity</b>	Kidney,Ovary,Umbilical cord blood,
<b>Function</b>	function:Accessory subunit of the mitochondrial membrane respiratory chain NADH dehydrogenase (Complex I), that is believed to be not involved in catalysis. Complex I functions in the transfer of electrons from NADH to the respiratory chain. The immediate electron acceptor for the enzyme is believed to be ubiquinone.,similarity:Belongs to the complex I NDUFC2 subunit family.,subunit:Complex I is composed of 45 different subunits.,
<b>Background</b>	function:Accessory subunit of the mitochondrial membrane respiratory chain NADH dehydrogenase (Complex I), that is believed to be not involved in catalysis. Complex I functions in the transfer of electrons from NADH to the respiratory chain. The immediate electron acceptor for the enzyme is believed to be ubiquinone.,similarity:Belongs to the complex I NDUFC2 subunit family.,subunit:Complex I is composed of 45 different subunits.,

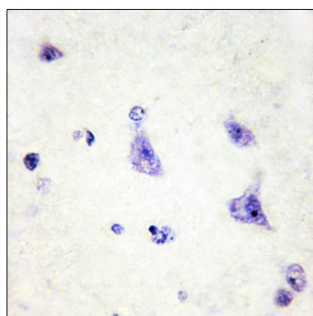
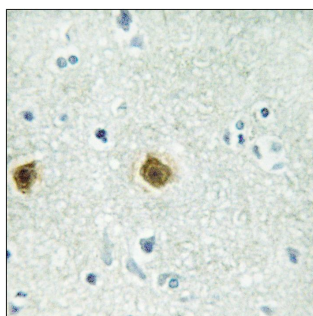
**matters needing attention**

Avoid repeated freezing and thawing!

**Usage suggestions**

This product can be used in immunological reaction related experiments. For more information, please consult technical personnel.

## Products Images



Immunohistochemistry analysis of paraffin-embedded human brain tissue, using NDUC2 Antibody. The picture on the right is blocked with the synthesized peptide.