



ATG14 Mouse mAb

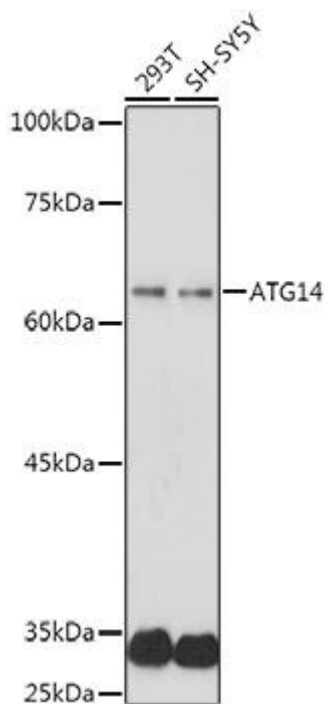
Catalog No	YP-mAb-18930
Isotype	IgG
Reactivity	Human,Mouse,Rat
Applications	WB
Gene Name	
Protein Name	
Immunogen	Synthesized peptide derived from human SLN
Specificity	Recombinant protein (or fragment).This information is considered to be commercially sensitive.
Formulation	
Source	Monoclonal,Mouse,IgG
Purification	Affinity purification
Dilution	WB 1:500-2000
Concentration	1 mg/ml
Purity	≥90%
Storage Stability	-20°C/1 year
Synonyms	ATG14L; BARKOR; KIAA0831; ATG14
Observed Band	65kDa
Calculated Molecular Weight	55kDa
Cell Pathway	
Tissue Specificity	
Function	
Background	Enables GTPase binding activity. Involved in several processes, including macroautophagy; regulation of phosphorylation; and response to mitochondrial depolarisation. Acts upstream of or within endosome to lysosome transport. Located in autophagosome and phagophore assembly site membrane. Is extrinsic component of omegasome membrane and extrinsic component of phagophore assembly site membrane.
matters needing attention	Avoid repeated freezing and thawing!



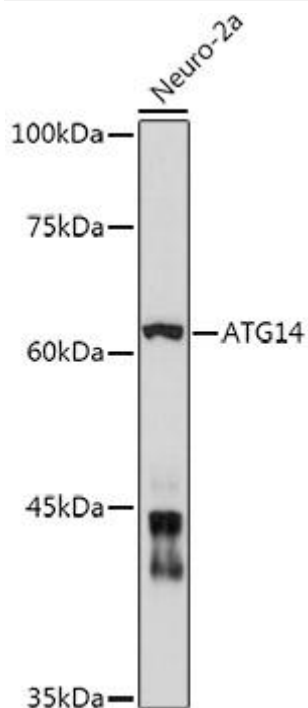
Usage suggestions

This product can be used in immunological reaction related experiments. For more information, please consult technical personnel.

Products Images



Western blot analysis of various lysates using ATG14 Mouse pAb (A7526) at 1:1000 dilution. Secondary antibody: HRP-conjugated Goat anti-Mouse IgG (H+L) (AS014) at 1:10000 dilution. Lysates/proteins: 25μg per lane. Blocking buffer: 3% nonfat dry milk in TBST. Detection: ECL Basic Kit. Exposure time: 180s



Western blot analysis of lysates from Neuro-2a cells, using ATG14 Mouse pAb (A7526) at 1:1000 dilution. Secondary antibody: HRP-conjugated Goat anti-Mouse IgG (H+L) (AS014) at 1:10000 dilution. Lysates/proteins: 25μg per lane. Blocking buffer: 3% nonfat dry milk in TBST. Detection: ECL Enhanced Kit. Exposure time: 180s.