



# Nestin (PTR1402) Mouse mAb

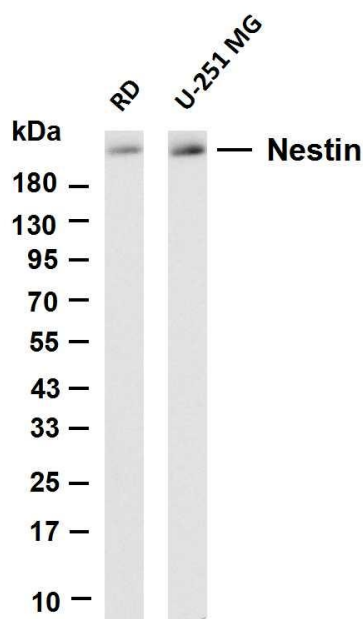
<b>Catalog No</b>	YP-mAb-18906
<b>Isotype</b>	IgG
<b>Reactivity</b>	Human
<b>Applications</b>	WB, IHC, IF, IP, ELISA
<b>Gene Name</b>	NES Nbla00170
<b>Protein Name</b>	Nestin
<b>Immunogen</b>	Synthesized peptide derived from human HIBCH
<b>Specificity</b>	AA range 1500-1621
<b>Formulation</b>	Endogenous
<b>Source</b>	PBS, 50% glycerol, 0.05% Proclin 300, 0.05%BSA
<b>Purification</b>	IHC 1:100-500; WB 1:500-2000; IF 1:100-500; ELISA 1:1000-5000; Note:For IHC,wesuggest antigen retrieval with TE buffer pH 9.0
<b>Dilution</b>	Monoclonal,Mouse,IgG
<b>Concentration</b>	1 mg/ml
<b>Purity</b>	≥90%
<b>Storage Stability</b>	-20°C/1 year
<b>Synonyms</b>	-15°C to -25°C/1 year(Do not lower than -25°C)
<b>Observed Band</b>	220kD
<b>Calculated Molecular Weight</b>	177kD
<b>Cell Pathway</b>	Cytoplasm
<b>Tissue Specificity</b>	CNS stem cells.
<b>Function</b>	developmental stage:Upon terminal neural differentiation, nestin is down-regulated and replaced by neurofilaments.,Function:May play a role in the trafficking and distribution of IF proteins and potentially other cellular factors to daughter cells during progenitor cell division.,similarity:Belongs to the intermediate filament family.,subunit:Interacts with FHOD3.,tissue specificity:CNS stem cells.,
<b>Background</b>	This gene encodes a member of the intermediate filament protein family and is expressed primarily in nerve cells.
<b>matters needing attention</b>	Avoid repeated freezing and thawing!



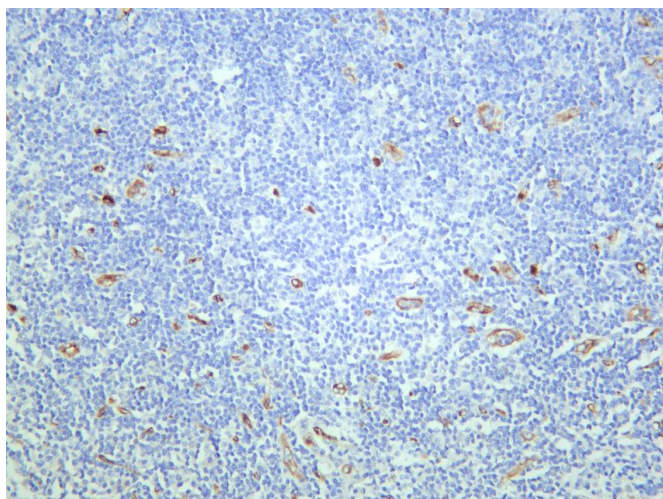
## Usage suggestions

This product can be used in immunological reaction related experiments. For more information, please consult technical personnel.

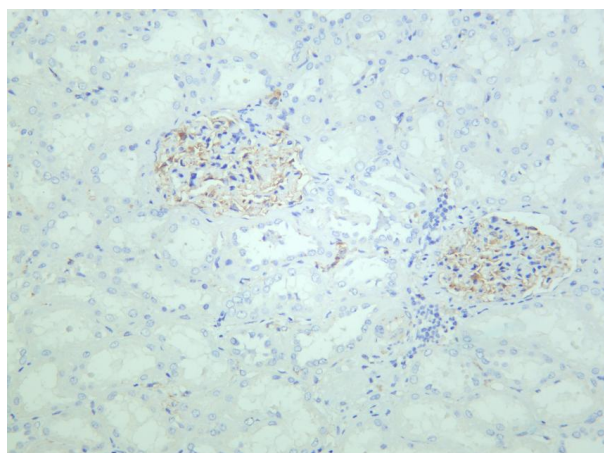
## Products Images



Various whole cell lysates were separated by 4-20% SDS-PAGE, and the membrane was blotted with anti-Nestin (PTR1402) antibody. The HRP-conjugated Goat anti-Mouse IgG(H + L) antibody was used to detect the antibody. Lane 1: RD Lane 2: U-251 MG Predicted band size: 177kDa Observed band size: 207kDa



Human tonsil was stained with anti-Nestin (PTR1402) rabbit antibody



Human kidney was stained with anti-Nestin (PTR1402) rabbit antibody