



# RNASEH1 Mouse mAb

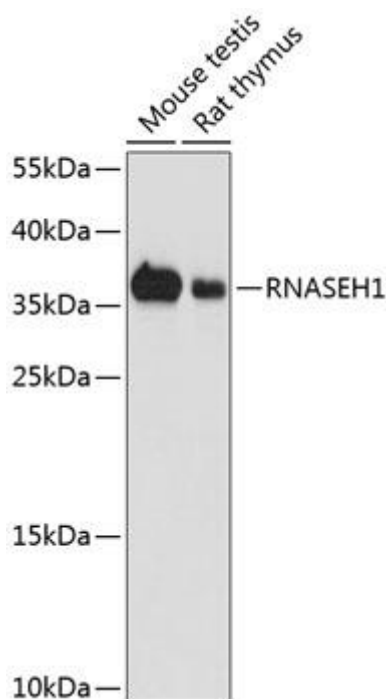
Catalog No	YP-mAb-18874
Isotype	IgG
Reactivity	Human,Mouse,Rat
Applications	WB
Gene Name	
Protein Name	
Immunogen	Recombinant protein (or fragment).This information is considered to be commercially sensitive.
Specificity	
Formulation	
Source	Monoclonal,Mouse,IgG
Purification	Affinity purification
Dilution	WB 1:500-2000
Concentration	1 mg/ml
Purity	≥90%
Storage Stability	-20°C/1 year
Synonyms	
Observed Band	37kDa
Calculated Molecular Weight	32kDa
Cell Pathway	
Tissue Specificity	
Function	
Background	This gene encodes an endonuclease that specifically degrades the RNA of RNA-DNA hybrids and plays a key role in DNA replication and repair. Alternate in-frame start codon initiation results in the production of alternate isoforms that are directed to the mitochondria or to the nucleus. The production of the mitochondrial isoform is modulated by an upstream open reading frame (uORF). Mutations in this gene have been found in individuals with progressive external ophthalmoplegia with mitochondrial DNA deletions, autosomal recessive 2. Alternative splicing results in additional coding and non-coding transcript variants. Pseudogenes of this gene have been defined on chromosomes 2 and 17.

**matters needing attention**

Avoid repeated freezing and thawing!

**Usage suggestions**

This product can be used in immunological reaction related experiments. For more information, please consult technical personnel.

**Products Images**

Western blot analysis of various lysates using RNASEH1 Mouse pAb (A9116) at 1:1000 dilution. Secondary antibody: HRP-conjugated Goat anti-Mouse IgG (H+L) (AS014) at 1:10000 dilution. Lysates/proteins: 25μg per lane. Blocking buffer: 3% nonfat dry milk in TBST. Detection: ECL Basic Kit (RM00020). Exposure time: 10s.