



Cleaved PARP (Asp214) Mouse mAb

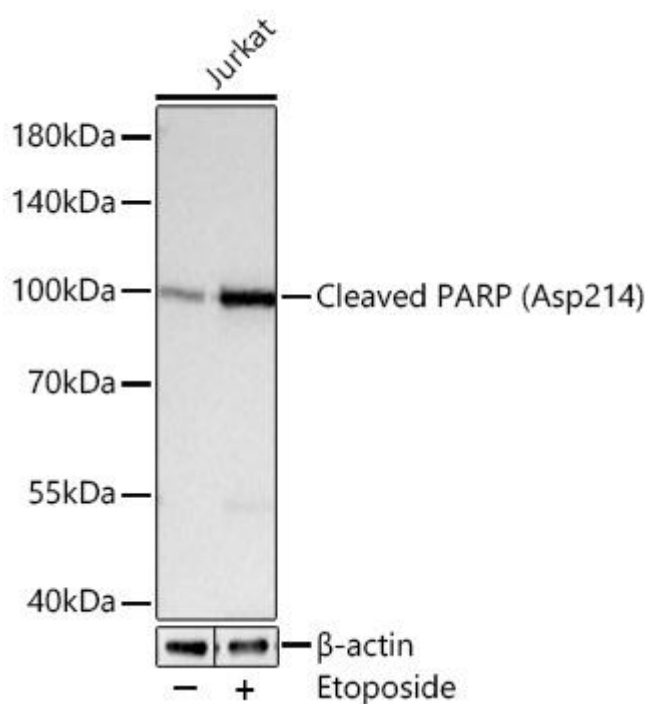
Catalog No	YP-mAb-18850
Isotype	IgG
Reactivity	Human,Mouse,Rat
Applications	WB
Gene Name	
Protein Name	
Immunogen	A synthetic peptide corresponding to a sequence within amino acids 201-300 of Mouse PARP (Asp214)
Specificity	
Formulation	
Source	Monoclonal,Mouse,IgG
Purification	Affinity purification
Dilution	WB 1:500-2000
Concentration	1 mg/ml
Purity	≥90%
Storage Stability	-20°C/1 year
Synonyms	PARP; PARS; PPOL; ADPRT; ARTD1; ADPRT1; PARP-1; ADPRT 1; pADPRT-1; Poly-PARP
Observed Band	89kDa
Calculated Molecular Weight	113kDa
Cell Pathway	
Tissue Specificity	
Function	
Background	This gene encodes a chromatin-associated enzyme, poly(ADP-ribosyl)transferase, which modifies various nuclear proteins by poly(ADP-ribosyl)ation. The modification is dependent on DNA and is involved in the regulation of various important cellular processes such as differentiation, proliferation, and tumor transformation and also in the regulation of the molecular events involved in the recovery of cell from DNA damage. In addition, this enzyme may be the site of mutation in Fanconi anemia, and may participate in the pathophysiology of type I diabetes.

**matters needing attention**

Avoid repeated freezing and thawing!

Usage suggestions

This product can be used in immunological reaction related experiments. For more information, please consult technical personnel.

Products Images

Western blot analysis of lysates from Jurkat cells using Cleaved PARP (Asp214) Mouse mAb (A27147) at 1:1000 dilution incubated overnight at 4°C. Jurkat cells were treated by Etoposide (25 μM) at 37°C for 5 hours. Secondary antibody: HRP-conjugated Goat anti-Mouse IgG (H+L) (AS014) at 1:10000 dilution. Lysates/proteins: 30 μg per lane. Blocking buffer: 3 % nonfat dry milk in TBST. Detection: ECL Basic Kit (RM00020). Exposure time: 0.5s.