

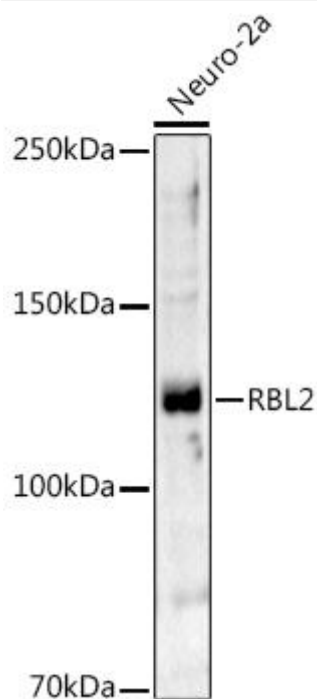


RBL2 Mouse mAb

Catalog No	YP-mAb-18844
Isotype	IgG
Reactivity	Human,Mouse,Rat
Applications	WB
Gene Name	
Protein Name	
Immunogen	A synthetic peptide corresponding to a sequence within amino acids 413-613 of human RBL2
Specificity	
Formulation	
Source	Monoclonal,Mouse,IgG
Purification	Affinity purification
Dilution	WB 1:500-2000
Concentration	1 mg/ml
Purity	≥90%
Storage Stability	-20°C/1 year
Synonyms	Rb2; P130; BRUWAG; RBL2
Observed Band	130kD
Calculated Molecular Weight	128kDa
Cell Pathway	
Tissue Specificity	
Function	
Background	Enables promoter-specific chromatin binding activity. Involved in regulation of lipid kinase activity. Acts upstream of or within negative regulation of gene expression. Located in chromosome; cytosol; and nuclear lumen
matters needing attention	Avoid repeated freezing and thawing!
Usage suggestions	This product can be used in immunological reaction related experiments. For more information, please consult technical personnel.



Products Images



Western blot analysis of lysates from Neuro-2a cells, using RBL2 Mouse pAb (A13649) at 1:1000 dilution. Secondary antibody: HRP-conjugated Goat anti-Mouse IgG (H+L) (AS014) at 1:10000 dilution. Lysates/proteins: 25μg per lane. Blocking buffer: 3% nonfat dry milk in TBST. Detection: ECL Basic Kit. Exposure time: 120s.