



# NIFK Monoclonal Antibody

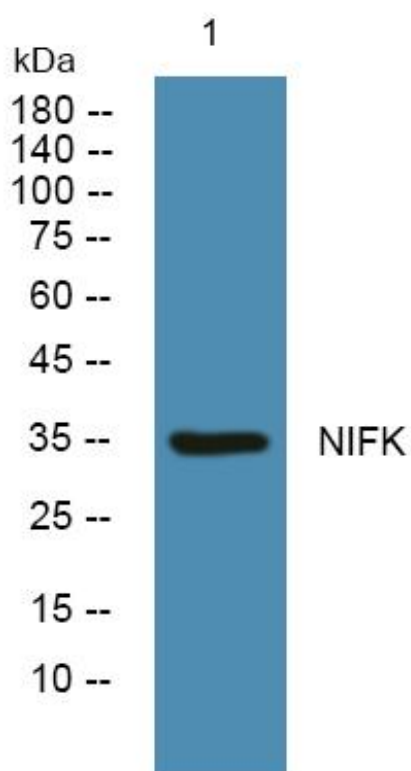
<b>Catalog No</b>	YP-mAb-16753
<b>Isotype</b>	IgG
<b>Reactivity</b>	Human;Mouse
<b>Applications</b>	WB
<b>Gene Name</b>	MKI67IP
<b>Protein Name</b>	MKI67 FHA domain-interacting nucleolar phosphoprotein
<b>Immunogen</b>	The antiserum was produced against synthesized peptide derived from human NIFK. AA range:200-249
<b>Specificity</b>	NIFK Monoclonal Antibody detects endogenous levels of NIFK protein.
<b>Formulation</b>	Liquid in PBS containing 50% glycerol, 0.5% BSA and 0.02% sodium azide.
<b>Source</b>	Monoclonal, Mouse,IgG
<b>Purification</b>	The antibody was affinity-purified from mouse antiserum by affinity-chromatography using epitope-specific immunogen.
<b>Dilution</b>	WB 1:500-1:2000
<b>Concentration</b>	1 mg/ml
<b>Purity</b>	≥90%
<b>Storage Stability</b>	-20°C/1 year
<b>Synonyms</b>	MKI67IP; NIFK; NOPP34; MKI67 FHA domain-interacting nucleolar phosphoprotein; Nucleolar phosphoprotein Nopp34; Nucleolar protein interacting with the FHA domain of pKi-67; hNIFK
<b>Observed Band</b>	34kD
<b>Cell Pathway</b>	Nucleus, nucleolus. Chromosome. Localizes to mitotic chromosomes in conjunction with MKI67.
<b>Tissue Specificity</b>	Brain,Cervix carcinoma,Epithelium,Lung,Plac
<b>Function</b>	PTM:Sequentially phosphorylated on Thr-238, Thr-234 and Ser-230. Thr-234 is phosphorylated only when Thr-238 is phosphorylated. Likewise, phosphorylation at Ser-230 requires that Thr-234 and Thr-238 are phosphorylated. Phosphorylation enhances MKI67 binding.,similarity:Contains 1 RRM (RNA recognition motif) domain.,subcellular location:Localizes to mitotic chromosomes in conjunction with MKI67.,subunit:Binds to the FHA domain of MKI67; this interaction is enhanced in mitosis.,
<b>Background</b>	This gene encodes a protein that interacts with the forkhead-associated domain of the Ki-67 antigen. The encoded protein may bind RNA and may play a role in mitosis and cell cycle progression. Multiple pseudogenes exist on chromosomes 5, 10, 12, 15, and 19.[provided by RefSeq, Jan 2009],

**matters needing attention**

Avoid repeated freezing and thawing!

**Usage suggestions**

This product can be used in immunological reaction related experiments. For more information, please consult technical personnel.

**Products Images**

Western Blot analysis of various cells using NIFK Monoclonal Antibody