



# NHE-9 Monoclonal Antibody

<b>Catalog No</b>	YP-mAb-16485
<b>Isotype</b>	IgG
<b>Reactivity</b>	Human;Mouse
<b>Applications</b>	WB
<b>Gene Name</b>	SLC9A9
<b>Protein Name</b>	Sodium/hydrogen exchanger 9
<b>Immunogen</b>	The antiserum was produced against synthesized peptide derived from human SLC9A9. AA range:171-220
<b>Specificity</b>	NHE-9 Monoclonal Antibody detects endogenous levels of NHE-9 protein.
<b>Formulation</b>	Liquid in PBS containing 50% glycerol, 0.5% BSA and 0.02% sodium azide.
<b>Source</b>	Monoclonal, Mouse,IgG
<b>Purification</b>	The antibody was affinity-purified from mouse antiserum by affinity-chromatography using epitope-specific immunogen.
<b>Dilution</b>	WB 1:500-1:2000
<b>Concentration</b>	1 mg/ml
<b>Purity</b>	≥90%
<b>Storage Stability</b>	-20°C/1 year
<b>Synonyms</b>	SLC9A9; NHE9; Nbla00118; Sodium/hydrogen exchanger 9; Na(+)/H(+) exchanger 9; NHE-9; Solute carrier family 9 member 9
<b>Observed Band</b>	65kD
<b>Cell Pathway</b>	Late endosome membrane ; Multi-pass membrane protein .
<b>Tissue Specificity</b>	Ubiquitously expressed in all tissues tested. Expressed at highest levels in heart and skeletal muscle, followed by placenta, kidney, and liver. Expressed in the brain, in the medulla and spinal cord.
<b>Function</b>	disease:A chromosomal aberration involving SLC9A9 may be a cause of early-onset behavioral/developmental disorder with features of attention deficit-hyperactivity disorder and intellectual disability (ADHD) [MIM:143465]. Inversion inv(3)(p14;q21). The inversion disrupts SLC9A9 and DOCK3.,function:May act in electroneutral exchange of protons for Na(+) across membranes. Involved in the effusion of Golgi luminal H(+) in exchange for cytosolic cations. Involved in organelle ion homeostasis by contributing to the maintenance of the unique acidic pH values of the Golgi and post-Golgi compartments in the cell.,similarity:Belongs to the monovalent cation:proton antiporter 1 (CPA1) transporter (TC 2.A.36) family.,tissue specificity:Ubiquitously expressed in all tissues tested. Expressed at highest levels in heart and skeletal muscle, followed by placenta, kidney, and liver. Expressed in the bra

**Background**

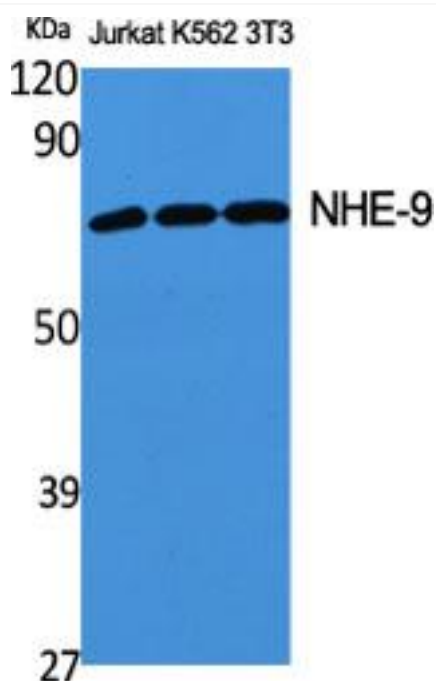
This gene encodes a sodium/proton exchanger that is a member of the solute carrier 9 protein family. The encoded protein localizes to the late recycling endosomes and may play an important role in maintaining cation homeostasis. Mutations in this gene are associated with autism susceptibility 16 and attention-deficit/hyperactivity disorder. [provided by RefSeq, Mar 2012],

**matters needing attention**

Avoid repeated freezing and thawing!

**Usage suggestions**

This product can be used in immunological reaction related experiments. For more information, please consult technical personnel.

**Products Images**

Western Blot analysis of various cells using NHE-9 Monoclonal Antibody