



Neuropsin Monoclonal Antibody

Catalog No	YP-mAb-13431
Isotype	IgG
Reactivity	Human;Mouse
Applications	WB
Gene Name	OPN5
Protein Name	Opsin-5
Immunogen	The antiserum was produced against synthesized peptide derived from human OPN5. AA range:251-300
Specificity	Neuropsin Monoclonal Antibody detects endogenous levels of Neuropsin protein.
Formulation	Liquid in PBS containing 50% glycerol, 0.5% BSA and 0.02% sodium azide.
Source	Monoclonal, Mouse,IgG
Purification	The antibody was affinity-purified from mouse antiserum by affinity-chromatography using epitope-specific immunogen.
Dilution	WB 1:500-1:2000
Concentration	1 mg/ml
Purity	≥90%
Storage Stability	-20°C/1 year
Synonyms	OPN5; GPR136; PGR12; TMEM13; Opsin-5; G-protein coupled receptor 136; G-protein coupled receptor PGR12; Neuropsin; Transmembrane protein 13
Observed Band	43kD
Cell Pathway	Cell membrane ; Multi-pass membrane protein .
Tissue Specificity	Detected in brain and retina and cell lines derived from neural retina.
Function	caution:The sequence shown here is derived from an Ensembl automatic analysis pipeline and should be considered as preliminary data.,PTM:It is uncertain whether Cys-315 or Cys-316 is palmitoylated.,similarity:Belongs to the G-protein coupled receptor 1 family. Opsin subfamily.,tissue specificity:Detected in brain and retina and cell lines derived from neural retina.,
Background	Opsins are members of the guanine nucleotide-binding protein (G protein)-coupled receptor superfamily. This opsin gene is expressed in the eye, brain, testes, and spinal cord. This gene belongs to the seven-exon subfamily of mammalian opsin genes that includes peropsin (RRH) and retinal G protein coupled receptor (RGR). Like these other seven-exon opsin genes, this family member may encode a protein with photoisomerase activity. Alternative splicing results in multiple transcript variants. [provided by RefSeq, Jun 2010],



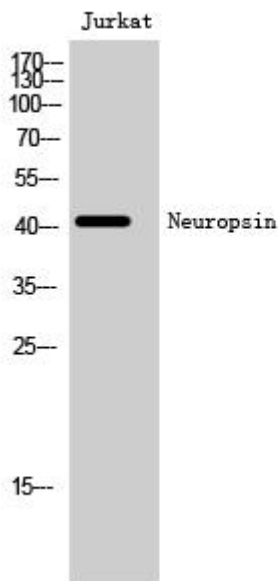
matters needing attention

Avoid repeated freezing and thawing!

Usage suggestions

This product can be used in immunological reaction related experiments. For more information, please consult technical personnel.

Products Images



Western Blot analysis of various cells using Neuropsin Monoclonal Antibody