

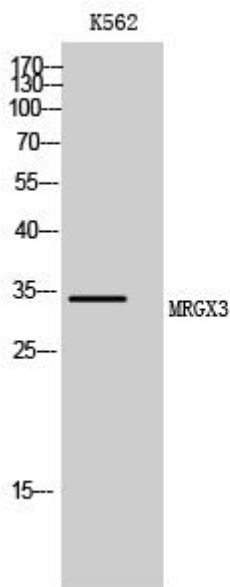


MRGX3 Monoclonal Antibody

Catalog No	YP-mAb-13426
Isotype	IgG
Reactivity	Human;Rat;Mouse;
Applications	WB
Gene Name	MRGPRX3
Protein Name	Mas-related G-protein coupled receptor member X3
Immunogen	The antiserum was produced against synthesized peptide derived from human MRGX3. AA range:99-148
Specificity	MRGX3 Monoclonal Antibody detects endogenous levels of MRGX3 protein.
Formulation	Liquid in PBS containing 50% glycerol, 0.5% BSA and 0.02% sodium azide.
Source	Monoclonal, Mouse,IgG
Purification	The antibody was affinity-purified from mouse antiserum by affinity-chromatography using epitope-specific immunogen.
Dilution	WB 1:500-1:2000
Concentration	1 mg/ml
Purity	≥90%
Storage Stability	-20°C/1 year
Synonyms	MRGPRX3; MRGX3; SNSR1; SNSR2; Mas-related G-protein coupled receptor member X3; Sensory neuron-specific G-protein coupled receptor 1/2
Observed Band	34kD
Cell Pathway	Cell membrane; Multi-pass membrane protein.
Tissue Specificity	Uniquely localized in a subset of small dorsal root and trigeminal sensory neurons.
Function	function:Orphan receptor. Probably involved in the function of nociceptive neurons. May regulate nociceptor function and/or development, including the sensation or modulation of pain. Potently activated by enkephalins.,similarity:Belongs to the G-protein coupled receptor 1 family. Mas subfamily.,tissue specificity:Uniquely localized in a subset of small dorsal root and trigeminal sensory neurons.,
Background	This gene encodes a member of the mas-related/sensory neuron specific subfamily of G protein coupled receptors. The encoded protein may be involved in sensory neuron regulation and in the modulation of pain. [provided by RefSeq, Oct 2009],
matters needing attention	Avoid repeated freezing and thawing!

**Usage suggestions**

This product can be used in immunological reaction related experiments. For more information, please consult technical personnel.

Products Images

Western Blot analysis of various cells using MRGX3 Monoclonal Antibody