

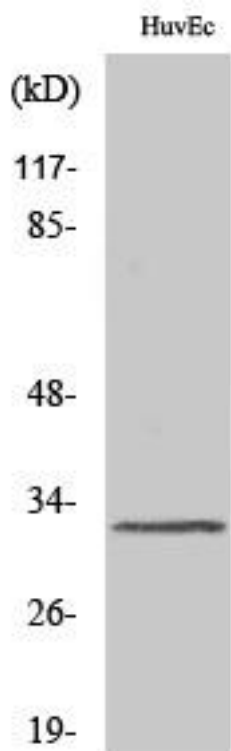


MRGG Monoclonal Antibody

Catalog No	YP-mAb-13424
Isotype	IgG
Reactivity	Human;Rat;Mouse;
Applications	WB
Gene Name	MRGPRG
Protein Name	Mas-related G-protein coupled receptor member G
Immunogen	The antiserum was produced against synthesized peptide derived from human MRGRG. AA range:231-280
Specificity	MRGG Monoclonal Antibody detects endogenous levels of MRGG protein.
Formulation	Liquid in PBS containing 50% glycerol, 0.5% BSA and 0.02% sodium azide.
Source	Monoclonal, Mouse,IgG
Purification	The antibody was affinity-purified from mouse antiserum by affinity-chromatography using epitope-specific immunogen.
Dilution	WB 1:500-1:2000
Concentration	1 mg/ml
Purity	≥90%
Storage Stability	-20°C/1 year
Synonyms	MRGPRG; GPR169; MRGG; Mas-related G-protein coupled receptor member G; G-protein coupled receptor 169
Observed Band	34kD
Cell Pathway	Cell membrane; Multi-pass membrane protein.
Tissue Specificity	
Function	function:Orphan receptor. May regulate nociceptor function and/or development, including the sensation or modulation of pain.,similarity:Belongs to the G-protein coupled receptor 1 family. Mas subfamily.,
Background	function:Orphan receptor. May regulate nociceptor function and/or development, including the sensation or modulation of pain.,similarity:Belongs to the G-protein coupled receptor 1 family. Mas subfamily.,
matters needing attention	Avoid repeated freezing and thawing!
Usage suggestions	This product can be used in immunological reaction related experiments. For more information, please consult technical personnel.



Products Images



Western Blot analysis of various cells using MRGG Monoclonal Antibody