



# LT $\beta$ R Monoclonal Antibody

|                           |   |
|---------------------------|---|
| <b>Catalog No</b>         | YP-mAb-13401  |
| <b>Isotype</b>            | IgG   |
| <b>Reactivity</b>         | Human;Mouse   |
| <b>Applications</b>       | WB  |
| <b>Gene Name</b>          | LTBR  |
| <b>Protein Name</b>       | Tumor necrosis factor receptor superfamily member 3   |
| <b>Immunogen</b>          | The antiserum was produced against synthesized peptide derived from human LTBR. AA range:11-60  |
| <b>Specificity</b>        | LT $\beta$ R Monoclonal Antibody detects endogenous levels of LT $\beta$ R protein.   |
| <b>Formulation</b>        | Liquid in PBS containing 50% glycerol, 0.5% BSA and 0.02% sodium azide.   |
| <b>Source</b>             | Monoclonal, Mouse,IgG   |
| <b>Purification</b>       | The antibody was affinity-purified from mouse antiserum by affinity-chromatography using epitope-specific immunogen.  |
| <b>Dilution</b>           | WB 1:500-1:2000   |
| <b>Concentration</b>      | 1 mg/ml   |
| <b>Purity</b>             | $\geq 90\%$   |
| <b>Storage Stability</b>  | -20°C/1 year  |
| <b>Synonyms</b>           | LTBR; D12S370; TNFCR; TNFR3; TNFRSF3; Tumor necrosis factor receptor superfamily member 3; Lymphotoxin-beta receptor; Tumor necrosis factor C receptor; Tumor necrosis factor receptor 2-related protein; Tumor necrosis factor receptor type II  |
| <b>Observed Band</b>      | 50kD  |
| <b>Cell Pathway</b>       | Membrane; Single-pass type I membrane protein.  |
| <b>Tissue Specificity</b> | Liver,Lung,   |
| <b>Function</b>           | function:Receptor for the heterotrimeric lymphotoxin containing LTA and LTB, and for TNFSF14/LIGHT. Promotes apoptosis via TRAF3 and TRAF5. May play a role in the development of lymphoid organs.,similarity:Contains 4 TNFR-Cys repeats.,subunit:Self-associates. Associates with TRAF3, TRAF4 and TRAF5. Interacts with HCV core protein.,   |
| <b>Background</b>         | lymphotoxin beta receptor(LTBR) Homo sapiens This gene encodes a member of the tumor necrosis factor receptor superfamily. The major ligands of this receptor include lymphotoxin alpha/beta and tumor necrosis factor ligand superfamily member 14. The encoded protein plays a role in signalling during the development of lymphoid and other organs, lipid metabolism, immune response, |



and programmed cell death. Activity of this receptor has also been linked to carcinogenesis. Alternatively spliced transcript variants encoding multiple isoforms have been observed. [provided by RefSeq, Aug 2012],

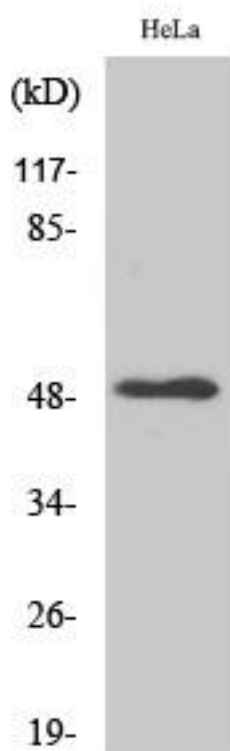
**matters needing attention**

Avoid repeated freezing and thawing!

**Usage suggestions**

This product can be used in immunological reaction related experiments. For more information, please consult technical personnel.

**Products Images**



Western Blot analysis of various cells using LTβR Monoclonal Antibody