



# LRP3 Monoclonal Antibody

<b>Catalog No</b>	YP-mAb-13398
<b>Isotype</b>	IgG
<b>Reactivity</b>	Human;Mouse;Rat
<b>Applications</b>	WB
<b>Gene Name</b>	LRP3
<b>Protein Name</b>	Low-density lipoprotein receptor-related protein 3
<b>Immunogen</b>	The antiserum was produced against synthesized peptide derived from human LRP3. AA range:17-66
<b>Specificity</b>	LRP3 Monoclonal Antibody detects endogenous levels of LRP3 protein.
<b>Formulation</b>	Liquid in PBS containing 50% glycerol, 0.5% BSA and 0.02% sodium azide.
<b>Source</b>	Monoclonal, Mouse,IgG
<b>Purification</b>	The antibody was affinity-purified from mouse antiserum by affinity-chromatography using epitope-specific immunogen.
<b>Dilution</b>	WB 1:500-1:2000
<b>Concentration</b>	1 mg/ml
<b>Purity</b>	≥90%
<b>Storage Stability</b>	-20°C/1 year
<b>Synonyms</b>	LRP3; Low-density lipoprotein receptor-related protein 3; LRP-3; 105 kDa low-density lipoprotein receptor-related protein; hLRp105
<b>Observed Band</b>	80kD
<b>Cell Pathway</b>	Membrane ; Single-pass type I membrane protein . Membrane, coated pit .
<b>Tissue Specificity</b>	Widely expressed. Highly expressed in skeletal muscle and ovary. Expressed at intermediate level in heart, brain, liver, pancreas, prostate and small intestine. Weakly expressed in testis, colon and leukocyte.
<b>Function</b>	function:Probable receptor, which may be involved in the internalization of lipophilic molecules and/or signal transduction. Its precise role is however unclear, since it does not bind to very low density lipoprotein (VLDL) or to LRPAP1 in vitro.,similarity:Belongs to the LDLR family.,similarity:Contains 2 CUB domains.,similarity:Contains 4 LDL-receptor class A domains.,subunit:Binds GGA1 and GGA2.,tissue specificity:Widely expressed. Highly expressed in skeletal muscle and ovary. Expressed at intermediate level in heart, brain, liver, pancreas, prostate and small intestine. Weakly expressed in testis, colon and leukocyte.,
<b>Background</b>	function:Probable receptor, which may be involved in the internalization of lipophilic molecules and/or signal transduction. Its precise role is however unclear, since it does not bind to very low density lipoprotein (VLDL) or to LRPAP1 in



vitro.,similarity:Belongs to the LDLR family.,similarity:Contains 2 CUB domains.,similarity:Contains 4 LDL-receptor class A domains.,subunit:Binds GGA1 and GGA2.,tissue specificity:Widely expressed. Highly expressed in skeletal muscle and ovary. Expressed at intermediate level in heart, brain, liver, pancreas, prostate and small intestine. Weakly expressed in testis, colon and leukocyte.,

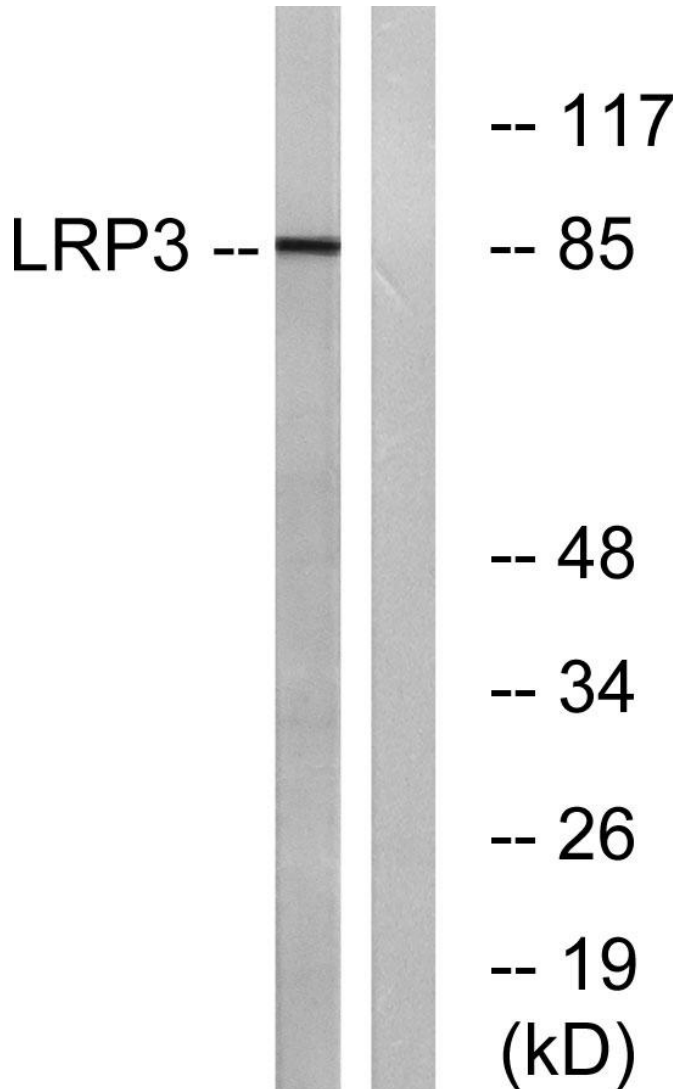
**matters needing attention**

Avoid repeated freezing and thawing!

**Usage suggestions**

This product can be used in immunological reaction related experiments. For more information, please consult technical personnel.

**Products Images**



Western Blot analysis of various cells using LRP3 Monoclonal Antibody