



## IL-3R $\beta$ Monoclonal Antibody

Catalog No	YP-mAb-13379
Isotype	IgG
Reactivity	Human;Mouse;Rat
Applications	WB
Gene Name	CSF2RB
Protein Name	Cytokine receptor common subunit beta
Immunogen	The antiserum was produced against synthesized peptide derived from human IL-3R beta. AA range:559-608
Specificity	IL-3R $\beta$ Monoclonal Antibody detects endogenous levels of IL-3R $\beta$ protein.
Formulation	Liquid in PBS containing 50% glycerol, 0.5% BSA and 0.02% sodium azide.
Source	Monoclonal, Mouse,IgG
Purification	The antibody was affinity-purified from mouse antiserum by affinity-chromatography using epitope-specific immunogen.
Dilution	WB 1:500-1:2000
Concentration	1 mg/ml
Purity	$\geq 90\%$
Storage Stability	-20°C/1 year
Synonyms	CSF2RB; IL3RB; IL5RB; Cytokine receptor common subunit beta; CDw131; GM-CSF/IL-3/IL-5 receptor common beta subunit; CD antigen CD131
Observed Band	125kD
Cell Pathway	Membrane; Single-pass type I membrane protein.
Tissue Specificity	Placenta,
Function	disease:Defects in CSF2RB are a cause of congenital pulmonary alveolar proteinosis (PAP) [MIM:265120]. PAP is an autosomal recessive fatal respiratory disease.,domain:The box 1 motif is required for JAK interaction and/or activation.,domain:The WSXWS motif appears to be necessary for proper protein folding and thereby efficient intracellular transport and cell-surface receptor binding.,function:High affinity receptor for interleukin-3, interleukin-5 and granulocyte-macrophage colony-stimulating factor.,similarity:Belongs to the type I cytokine receptor family. Type 4 subfamily.,similarity:Contains 2 fibronectin type-III domains.,subunit:Heterodimer of an alpha and a beta subunit. The beta subunit is common to the IL3, IL5 and GM-CSF receptors.,
Background	The protein encoded by this gene is the common beta chain of the high affinity receptor for IL-3, IL-5 and CSF. Defects in this gene have been reported to be associated with protein alveolar proteinosis (PAP). [provided by RefSeq, Jul



2008],

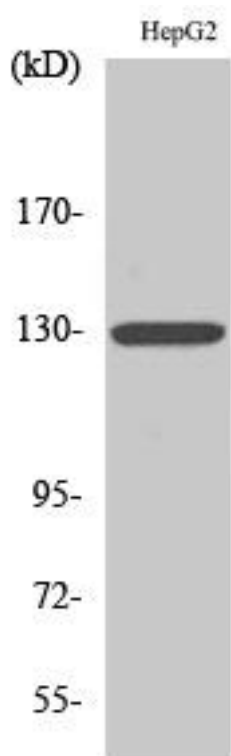
**matters needing attention**

Avoid repeated freezing and thawing!

**Usage suggestions**

This product can be used in immunological reaction related experiments. For more information, please consult technical personnel.

**Products Images**



Western Blot analysis of various cells using IL-3R  $\beta$  Monoclonal Antibody