

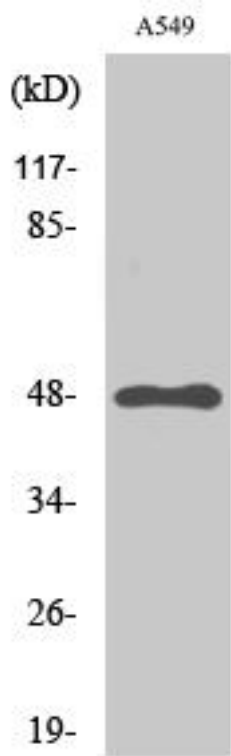


GPR83 Monoclonal Antibody

Catalog No	YP-mAb-13350
Isotype	IgG
Reactivity	Human;Rat;Mouse;
Applications	WB
Gene Name	GPR83
Protein Name	Probable G-protein coupled receptor 83
Immunogen	The antiserum was produced against synthesized peptide derived from human GPR83. AA range:361-410
Specificity	GPR83 Monoclonal Antibody detects endogenous levels of GPR83 protein.
Formulation	Liquid in PBS containing 50% glycerol, 0.5% BSA and 0.02% sodium azide.
Source	Monoclonal, Mouse,IgG
Purification	The antibody was affinity-purified from mouse antiserum by affinity-chromatography using epitope-specific immunogen.
Dilution	WB 1:500-1:2000
Concentration	1 mg/ml
Purity	≥90%
Storage Stability	-20°C/1 year
Synonyms	GPR83; GPR72; KIAA1540; Probable G-protein coupled receptor 83; G-protein coupled receptor 72
Observed Band	48kD
Cell Pathway	Cell membrane ; Multi-pass membrane protein . Colocalizes with GPR171 in the paraventricular nucleus. Colocalizes with the ghrelin receptor GHSR1A in the hypothalamus. .
Tissue Specificity	Highly expressed in the brain and spinal cord, and found in lower concentrations in the thymus and other tissues.
Function	function:Orphan receptor. Could be a neuropeptide y receptor.,similarity:Belongs to the G-protein coupled receptor 1 family.,tissue specificity:Brain specific.,
Background	function:Orphan receptor. Could be a neuropeptide y receptor.,similarity:Belongs to the G-protein coupled receptor 1 family.,tissue specificity:Brain specific.,
matters needing attention	Avoid repeated freezing and thawing!
Usage suggestions	This product can be used in immunological reaction related experiments. For more information, please consult technical personnel.



Products Images



Western Blot analysis of various cells using GPR83 Monoclonal Antibody