



GPR40 Monoclonal Antibody

Catalog No	YP-mAb-13337
Isotype	IgG
Reactivity	Human;Monkey
Applications	WB
Gene Name	FFAR1
Protein Name	Free fatty acid receptor 1
Immunogen	The antiserum was produced against synthesized peptide derived from human FFAR1. AA range:185-234
Specificity	GPR40 Monoclonal Antibody detects endogenous levels of GPR40 protein.
Formulation	Liquid in PBS containing 50% glycerol, 0.5% BSA and 0.02% sodium azide.
Source	Monoclonal, Mouse,IgG
Purification	The antibody was affinity-purified from mouse antiserum by affinity-chromatography using epitope-specific immunogen.
Dilution	WB 1:500-1:2000
Concentration	1 mg/ml
Purity	≥90%
Storage Stability	-20°C/1 year
Synonyms	FFAR1; GPR40; Free fatty acid receptor 1; G-protein coupled receptor 40
Observed Band	26kD
Cell Pathway	Cell membrane ; Multi-pass membrane protein .
Tissue Specificity	Detected in brain and pancreas. Detected in pancreatic beta cells.
Function	function:Receptor for medium and long chain saturated and unsaturated fatty acids. Binding of the ligand increase intracellular calcium concentration and amplify glucose-stimulated insulin secretion. The activity of this receptor is mediated by G-proteins that activate phospholipase C. Seems to act through a G(q) and G(i)-mediated pathway.,similarity:Belongs to the G-protein coupled receptor 1 family.,tissue specificity:Expressed abundantly in pancreatic beta cells.,
Background	This gene encodes a member of the GP40 family of G protein-coupled receptors that are clustered together on chromosome 19. The encoded protein is a receptor for medium and long chain free fatty acids and may be involved in the metabolic regulation of insulin secretion. Polymorphisms in this gene may be associated with type 2 diabetes. [provided by RefSeq, Apr 2009],

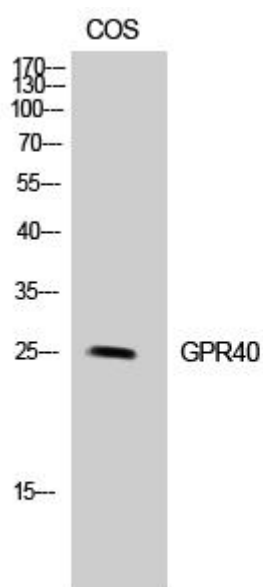
**matters needing attention**

Avoid repeated freezing and thawing!

Usage suggestions

This product can be used in immunological reaction related experiments. For more information, please consult technical personnel.

Products Images



Western Blot analysis of various cells using GPR40 Monoclonal Antibody