

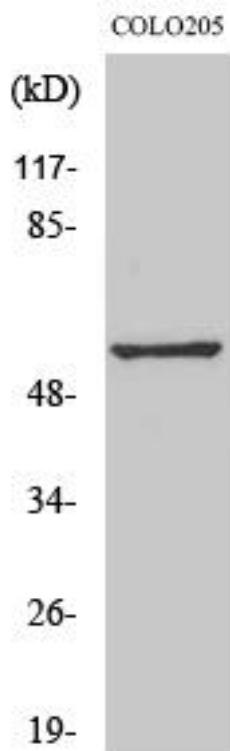


GPR176 Monoclonal Antibody

Catalog No	YP-mAb-13322
Isotype	IgG
Reactivity	Human;Mouse;Rat
Applications	WB
Gene Name	GPR176
Protein Name	Probable G-protein coupled receptor 176
Immunogen	The antiserum was produced against synthesized peptide derived from human GPR176. AA range:466-515
Specificity	GPR176 Monoclonal Antibody detects endogenous levels of GPR176 protein.
Formulation	Liquid in PBS containing 50% glycerol, 0.5% BSA and 0.02% sodium azide.
Source	Monoclonal, Mouse,IgG
Purification	The antibody was affinity-purified from mouse antiserum by affinity-chromatography using epitope-specific immunogen.
Dilution	WB 1:500-1:2000
Concentration	1 mg/ml
Purity	≥90%
Storage Stability	-20°C/1 year
Synonyms	GPR176; Probable G-protein coupled receptor 176; HB-954
Observed Band	57kD
Cell Pathway	Cell membrane ; Multi-pass membrane protein .
Tissue Specificity	Fetal brain,Ovary,
Function	function:Orphan receptor.,similarity:Belongs to the G-protein coupled receptor 1 family.,
Background	Members of the G protein-coupled receptor family, such as GPR176, are cell surface receptors involved in responses to hormones, growth factors, and neurotransmitters (Hata et al., 1995 [PubMed 7893747]).[supplied by OMIM, Jul 2008],
matters needing attention	Avoid repeated freezing and thawing!
Usage suggestions	This product can be used in immunological reaction related experiments. For more information, please consult technical personnel.



Products Images



Western Blot analysis of various cells using GPR176 Monoclonal Antibody