



GPR172B Monoclonal Antibody

Catalog No	YP-mAb-13318
Isotype	IgG
Reactivity	Human;Rat;Mouse;
Applications	WB
Gene Name	SLC52A1
Protein Name	Solute carrier family 52 riboflavin transporter member 1
Immunogen	The antiserum was produced against synthesized peptide derived from human PEVR2. AA range:235-284
Specificity	GPR172B Monoclonal Antibody detects endogenous levels of GPR172B protein.
Formulation	Liquid in PBS containing 50% glycerol, 0.5% BSA and 0.02% sodium azide.
Source	Monoclonal, Mouse,IgG
Purification	The antibody was affinity-purified from mouse antiserum by affinity-chromatography using epitope-specific immunogen.
Dilution	WB 1:500-1:2000
Concentration	1 mg/ml
Purity	≥90%
Storage Stability	-20°C/1 year
Synonyms	SLC52A1; GPR172B; PAR2; RFT1; Solute carrier family 52; riboflavin transporter, member 1; Porcine endogenous retrovirus A receptor 2; PERV-A receptor 2; Protein GPR172B; Riboflavin transporter 1; hRFT1
Observed Band	46kD
Cell Pathway	Cell membrane ; Multi-pass membrane protein .
Tissue Specificity	Widely expressed. Highly expressed in the testis, placenta and small intestine. Expressed at lower level in other tissues.
Function	function:Acts as receptor for porcine endogenous retrovirus subgroup A (PERV-A).,similarity:Belongs to the PERVR family.,tissue specificity:Detected in a wide variety of tissues. High expression in testis.,
Background	Biological redox reactions require electron donors and acceptor. Vitamin B2 is the source for the flavin in flavin adenine dinucleotide (FAD) and flavin mononucleotide (FMN) which are common redox reagents. This gene encodes a member of the riboflavin (vitamin B2) transporter family. Haploinsufficiency of this protein can cause maternal riboflavin deficiency. Multiple alternatively spliced variants, encoding the same protein, have been identified. [provided by RefSeq, Jan 2013],

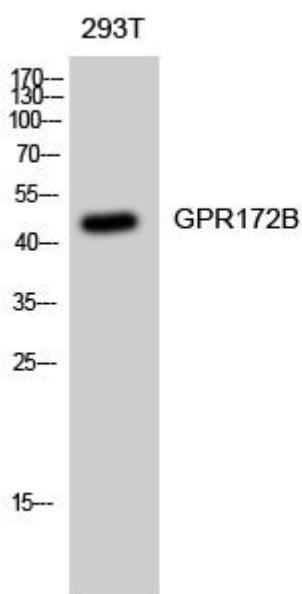
**matters needing attention**

Avoid repeated freezing and thawing!

Usage suggestions

This product can be used in immunological reaction related experiments. For more information, please consult technical personnel.

Products Images



Western Blot analysis of various cells using GPR172B Monoclonal Antibody