

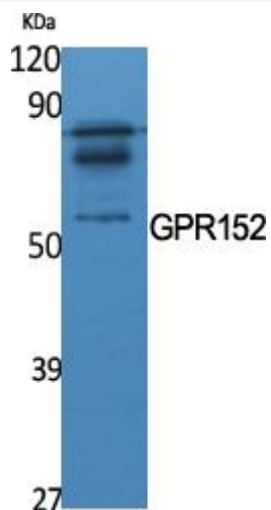


GPR152 Monoclonal Antibody

Catalog No	YP-mAb-13310
Isotype	IgG
Reactivity	Human;Rat;Mouse;
Applications	WB
Gene Name	GPR152
Protein Name	Probable G-protein coupled receptor 152
Immunogen	The antiserum was produced against synthesized peptide derived from human GPR152. AA range:10-59
Specificity	GPR152 Monoclonal Antibody detects endogenous levels of GPR152 protein.
Formulation	Liquid in PBS containing 50% glycerol, 0.5% BSA and 0.02% sodium azide.
Source	Monoclonal, Mouse,IgG
Purification	The antibody was affinity-purified from mouse antiserum by affinity-chromatography using epitope-specific immunogen.
Dilution	WB 1:500-1:2000
Concentration	1 mg/ml
Purity	≥90%
Storage Stability	-20°C/1 year
Synonyms	GPR152; PGR5; Probable G-protein coupled receptor 152; G-protein coupled receptor PGR5
Observed Band	51kD
Cell Pathway	Cell membrane; Multi-pass membrane protein.
Tissue Specificity	Retina,
Function	function:Orphan receptor.,similarity:Belongs to the G-protein coupled receptor 1 family.,
Background	function:Orphan receptor.,similarity:Belongs to the G-protein coupled receptor 1 family.,
matters needing attention	Avoid repeated freezing and thawing!
Usage suggestions	This product can be used in immunological reaction related experiments. For more information, please consult technical personnel.



Products Images



Western Blot analysis of various cells using GPR152 Monoclonal Antibody