

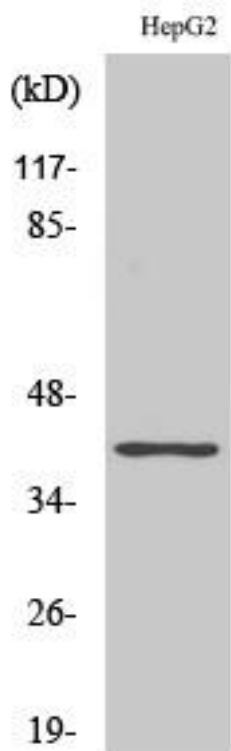


# GPR15 Monoclonal Antibody

<b>Catalog No</b>	YP-mAb-13306
<b>Isotype</b>	IgG
<b>Reactivity</b>	Human;Mouse
<b>Applications</b>	WB
<b>Gene Name</b>	GPR15
<b>Protein Name</b>	G-protein coupled receptor 15
<b>Immunogen</b>	The antiserum was produced against synthesized peptide derived from human GPR15. AA range:201-250
<b>Specificity</b>	GPR15 Monoclonal Antibody detects endogenous levels of GPR15 protein.
<b>Formulation</b>	Liquid in PBS containing 50% glycerol, 0.5% BSA and 0.02% sodium azide.
<b>Source</b>	Monoclonal, Mouse,IgG
<b>Purification</b>	The antibody was affinity-purified from mouse antiserum by affinity-chromatography using epitope-specific immunogen.
<b>Dilution</b>	WB 1:500-1:2000
<b>Concentration</b>	1 mg/ml
<b>Purity</b>	≥90%
<b>Storage Stability</b>	-20°C/1 year
<b>Synonyms</b>	GPR15; G-protein coupled receptor 15; Brother of Bonzo; BoB
<b>Observed Band</b>	40kD
<b>Cell Pathway</b>	Cell membrane; Multi-pass membrane protein.
<b>Tissue Specificity</b>	Liver,
<b>Function</b>	function:Probable chemokine receptor. Alternative coreceptor with CD4 for HIV-1 infection.,similarity:Belongs to the G-protein coupled receptor 1 family.,
<b>Background</b>	This gene encodes a G protein-coupled receptor that acts as a chemokine receptor for human immunodeficiency virus type 1 and 2. The encoded protein localizes to the cell membrane. [provided by RefSeq, Nov 2012],
<b>matters needing attention</b>	Avoid repeated freezing and thawing!
<b>Usage suggestions</b>	This product can be used in immunological reaction related experiments. For more information, please consult technical personnel.



## Products Images



Western Blot analysis of various cells using GPR15 Monoclonal Antibody