

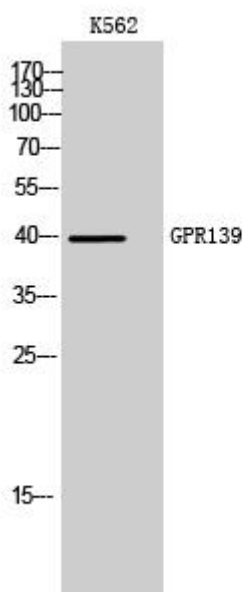


GPR139 Monoclonal Antibody

Catalog No	YP-mAb-13300
Isotype	IgG
Reactivity	Human;Mouse;Rat
Applications	WB
Gene Name	GPR139
Protein Name	Probable G-protein coupled receptor 139
Immunogen	The antiserum was produced against synthesized peptide derived from human GPR139. AA range:181-230
Specificity	GPR139 Monoclonal Antibody detects endogenous levels of GPR139 protein.
Formulation	Liquid in PBS containing 50% glycerol, 0.5% BSA and 0.02% sodium azide.
Source	Monoclonal, Mouse,IgG
Purification	The antibody was affinity-purified from mouse antiserum by affinity-chromatography using epitope-specific immunogen.
Dilution	WB 1:500-1:2000
Concentration	1 mg/ml
Purity	≥90%
Storage Stability	-20°C/1 year
Synonyms	GPR139; GPRG1; PGR3; Probable G-protein coupled receptor 139; G(q)-coupled orphan receptor GPRg1; G-protein-coupled receptor PGR3
Observed Band	40kD
Cell Pathway	Cell membrane; Multi-pass membrane protein.
Tissue Specificity	Expressed almost exclusively in the brain. Detected at very low levels in the peripheral tissues.
Function	function:Orphan receptor. Seems to act through a G(q/11)-mediated pathway.,similarity:Belongs to the G-protein coupled receptor 1 family.,tissue specificity:Expressed almost exclusively in the brain. Detected at very low levels in the peripheral tissues.,
Background	This gene encodes a member of the rhodopsin family of G-protein-coupled receptors. The encoded protein is almost exclusively expressed in the central nervous system. L-tryptophan and L-phenylalanine may act as the physiologic ligands of the encoded protein. Alternative splicing results in multiple transcript variants. [provided by RefSeq, Jan 2016],
matters needing attention	Avoid repeated freezing and thawing!

**Usage suggestions**

This product can be used in immunological reaction related experiments. For more information, please consult technical personnel.

Products Images

Western Blot analysis of various cells using GPR139 Monoclonal Antibody