



GPR116 Monoclonal Antibody

Catalog No	YP-mAb-13289
Isotype	IgG
Reactivity	Human;Rat;Mouse;
Applications	WB
Gene Name	GPR116
Protein Name	Probable G-protein coupled receptor 116
Immunogen	The antiserum was produced against synthesized peptide derived from human GPR116. AA range:11-60
Specificity	GPR116 Monoclonal Antibody detects endogenous levels of GPR116 protein.
Formulation	Liquid in PBS containing 50% glycerol, 0.5% BSA and 0.02% sodium azide.
Source	Monoclonal, Mouse,IgG
Purification	The antibody was affinity-purified from mouse antiserum by affinity-chromatography using epitope-specific immunogen.
Dilution	WB 1:500-1:2000
Concentration	1 mg/ml
Purity	≥90%
Storage Stability	-20°C/1 year
Synonyms	GPR116; KIAA0758; Probable G-protein coupled receptor 116
Observed Band	150kD
Cell Pathway	Cell membrane ; Multi-pass membrane protein .
Tissue Specificity	Brain,Plasma,Testis,
Function	function:May have a role in the regulation of acid-base balance.,PTM:Proteolytically cleaved into 2 highly conserved sites: one in the SEA domain and the other in the stalk domain region preceding the first transmembrane. The later 2 subunits, the extracellular subunit and the seven-transmembrane subunit, remain tightly associated and non-covalently linked.,sequence caution:Contaminating sequence. Potential poly-A sequence.,similarity:Belongs to the G-protein coupled receptor 2 family. LN-TM7 subfamily.,similarity:Contains 1 GPS domain.,similarity:Contains 1 SEA domain.,similarity:Contains 3 Ig-like (immunoglobulin-like) domains.,subunit:Exists as disulfide-linked dimers at the cell surface.,
Background	function:May have a role in the regulation of acid-base balance.,PTM:Proteolytically cleaved into 2 highly conserved sites: one in the SEA domain and the other in the stalk domain region preceding the first transmembrane. The later 2 subunits, the extracellular subunit and the



seven-transmembrane subunit, remain tightly associated and non-covalently linked.,sequence caution:Contaminating sequence. Potential poly-A sequence.,similarity:Belongs to the G-protein coupled receptor 2 family. LN-TM7 subfamily.,similarity:Contains 1 GPS domain.,similarity:Contains 1 SEA domain.,similarity:Contains 3 Ig-like (immunoglobulin-like) domains.,subunit:Exists as disulfide-linked dimers at the cell surface.,

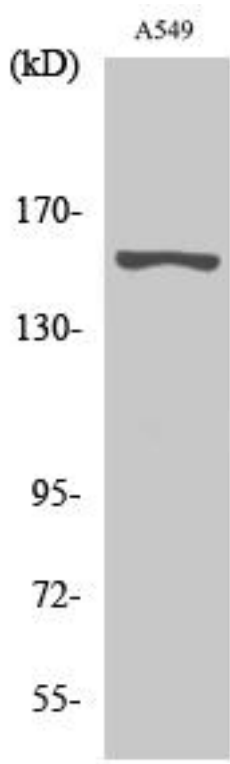
matters needing attention

Avoid repeated freezing and thawing!

Usage suggestions

This product can be used in immunological reaction related experiments. For more information, please consult technical personnel.

Products Images



Western Blot analysis of various cells using GPR116 Monoclonal Antibody