

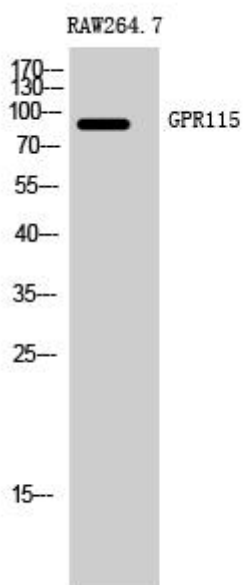


GPR115 Monoclonal Antibody

| | |
|----------------------------------|---|
| Catalog No | YP-mAb-13288 |
| Isotype | IgG |
| Reactivity | Human;Mouse |
| Applications | WB |
| Gene Name | GPR115 |
| Protein Name | Probable G-protein coupled receptor 115 |
| Immunogen | The antiserum was produced against synthesized peptide derived from human GPR115. AA range:641-690 |
| Specificity | GPR115 Monoclonal Antibody detects endogenous levels of GPR115 protein. |
| Formulation | Liquid in PBS containing 50% glycerol, 0.5% BSA and 0.02% sodium azide. |
| Source | Monoclonal, Mouse,IgG |
| Purification | The antibody was affinity-purified from mouse antiserum by affinity-chromatography using epitope-specific immunogen. |
| Dilution | WB 1:500-1:2000 |
| Concentration | 1 mg/ml |
| Purity | ≥90% |
| Storage Stability | -20°C/1 year |
| Synonyms | GPR115; PGR18; Probable G-protein coupled receptor 115; G-protein coupled receptor PGR18 |
| Observed Band | 82kD |
| Cell Pathway | Membrane ; Multi-pass membrane protein . |
| Tissue Specificity | Testis, |
| Function | function:Orphan receptor.,similarity:Belongs to the G-protein coupled receptor 2 family. LN-TM7 subfamily.,similarity:Contains 1 GPS domain., |
| Background | function:Orphan receptor.,similarity:Belongs to the G-protein coupled receptor 2 family. LN-TM7 subfamily.,similarity:Contains 1 GPS domain., |
| matters needing attention | Avoid repeated freezing and thawing! |
| Usage suggestions | This product can be used in immunological reaction related experiments. For more information, please consult technical personnel. |



Products Images



Western Blot analysis of various cells using GPR115 Monoclonal Antibody