

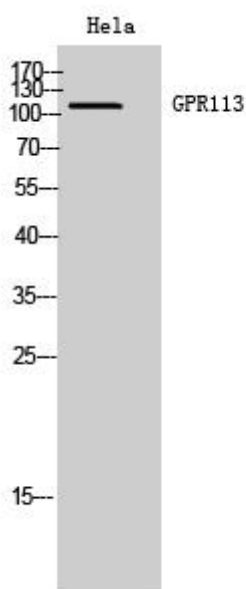


GPR113 Monoclonal Antibody

Catalog No	YP-mAb-13286
Isotype	IgG
Reactivity	Human;Rat;Mouse;
Applications	WB
Gene Name	GPR113
Protein Name	Probable G-protein coupled receptor 113
Immunogen	The antiserum was produced against synthesized peptide derived from human GPR113. AA range:21-70
Specificity	GPR113 Monoclonal Antibody detects endogenous levels of GPR113 protein.
Formulation	Liquid in PBS containing 50% glycerol, 0.5% BSA and 0.02% sodium azide.
Source	Monoclonal, Mouse,IgG
Purification	The antibody was affinity-purified from mouse antiserum by affinity-chromatography using epitope-specific immunogen.
Dilution	WB 1:500-1:2000
Concentration	1 mg/ml
Purity	≥90%
Storage Stability	-20°C/1 year
Synonyms	GPR113; PGR23; Probable G-protein coupled receptor 113; G-protein coupled receptor PGR23
Observed Band	116kD
Cell Pathway	Membrane ; Multi-pass membrane protein .
Tissue Specificity	Cerebellum,
Function	function:Orphan receptor.,similarity:Belongs to the G-protein coupled receptor 2 family. LN-TM7 subfamily.,similarity:Contains 1 GPS domain.,
Background	function:Orphan receptor.,similarity:Belongs to the G-protein coupled receptor 2 family. LN-TM7 subfamily.,similarity:Contains 1 GPS domain.,
matters needing attention	Avoid repeated freezing and thawing!
Usage suggestions	This product can be used in immunological reaction related experiments. For more information, please consult technical personnel.



Products Images



Western Blot analysis of various cells using GPR113 Monoclonal Antibody