

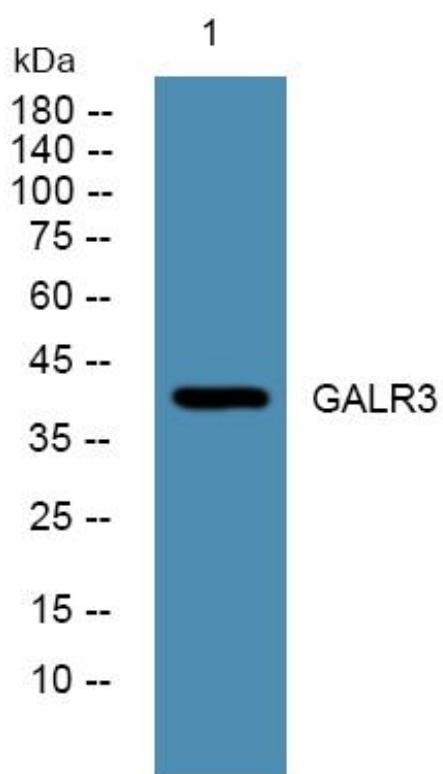


GALR3 Monoclonal Antibody

Catalog No	YP-mAb-13271
Isotype	IgG
Reactivity	Human;Rat;Mouse;
Applications	WB
Gene Name	GALR3
Protein Name	Galanin receptor type 3
Immunogen	The antiserum was produced against synthesized peptide derived from human GALR3. AA range:291-340
Specificity	GALR3 Monoclonal Antibody detects endogenous levels of GALR3 protein.
Formulation	Liquid in PBS containing 50% glycerol, 0.5% BSA and 0.02% sodium azide.
Source	Monoclonal, Mouse,IgG
Purification	The antibody was affinity-purified from mouse antiserum by affinity-chromatography using epitope-specific immunogen.
Dilution	WB 1:500-1:2000
Concentration	1 mg/ml
Purity	≥90%
Storage Stability	-20°C/1 year
Synonyms	GALR3; GALNR3; Galanin receptor type 3; GAL3-R; GALR-3
Observed Band	40kD
Cell Pathway	Cell membrane; Multi-pass membrane protein.
Tissue Specificity	Uterus,
Function	function:Receptor for the hormone galanin.,similarity:Belongs to the G-protein coupled receptor 1 family.,
Background	The neuropeptide galanin modulates a variety of physiologic processes including cognition/memory, sensory/pain processing, hormone secretion, and feeding behavior. The human galanin receptors are G protein-coupled receptors that functionally couple to their intracellular effector through distinct signaling pathways. GALR3 is found in many tissues and may be expressed as 1.4-, 2.4-, and 5-kb transcripts [provided by RefSeq, Jul 2008],
matters needing attention	Avoid repeated freezing and thawing!
Usage suggestions	This product can be used in immunological reaction related experiments. For more information, please consult technical personnel.



Products Images



Western Blot analysis of various cells using GALR3 Monoclonal Antibody