



ChemR23 Monoclonal Antibody

Catalog No	YP-mAb-13176
Isotype	IgG
Reactivity	Human;Mouse;Rat
Applications	WB
Gene Name	CMKLR1
Protein Name	Chemokine-like receptor 1
Immunogen	The antiserum was produced against synthesized peptide derived from human CMKLR1. AA range:221-270
Specificity	ChemR23 Monoclonal Antibody detects endogenous levels of ChemR23 protein.
Formulation	Liquid in PBS containing 50% glycerol, 0.5% BSA and 0.02% sodium azide.
Source	Monoclonal, Mouse,IgG
Purification	The antibody was affinity-purified from mouse antiserum by affinity-chromatography using epitope-specific immunogen.
Dilution	WB 1:500-1:2000
Concentration	1 mg/ml
Purity	≥90%
Storage Stability	-20°C/1 year
Synonyms	CMKLR1; CHEMR23; DEZ; Chemokine-like receptor 1; G-protein coupled receptor ChemR23; G-protein coupled receptor DEZ
Observed Band	42kD
Cell Pathway	Cell membrane ; Multi-pass membrane protein . Internalizes efficiently in response to RARRES2. .
Tissue Specificity	Prominently expressed in developing osseous and cartilaginous tissue. Also found in adult parathyroid glands. Expressed in cardiovascular system, brain, kidney, gastrointestinal tissues and myeloid tissues. Expressed in a broad array of tissues associated with hematopoietic and immune function including, spleen, thymus, appendix, lymph node, bone marrow and fetal liver. Among leukocyte populations abundant expression in monocyte-derived macrophage and immature dendritic cells (DCs). High expression in blood monocytes and low levels in polymorphonuclear cells and T-cells. Expressed on endothelial cells. Highly expressed in differentiating adipocytes.
Function	developmental stage:Expressed during bone development.,function:Orphan receptor. Could be a chemotactic peptide receptor. May have a function in bone metabolism. Acts as a coreceptor for several SIV strains (SIVMAC316, SIVMAC239, SIVMACL7E-FR and SIVSM62A), as well as a primary HIV-1 strain (92UG024-2).,similarity:Belongs to the G-protein coupled receptor 1 family.,tissue specificity:Prominently expressed in developing osseous and cartilaginous tissue. Also found in adult parathyroid glands.,



Background

developmental stage: Expressed during bone development., function: Orphan receptor. Could be a chemotactic peptide receptor. May have a function in bone metabolism. Acts as a coreceptor for several SIV strains (SIVMAC316, SIVMAC239, SIVMACL7E-FR and SIVSM62A), as well as a primary HIV-1 strain (92UG024-2)., similarity: Belongs to the G-protein coupled receptor 1 family., tissue specificity: Prominently expressed in developing osseous and cartilaginous tissue. Also found in adult parathyroid glands.,

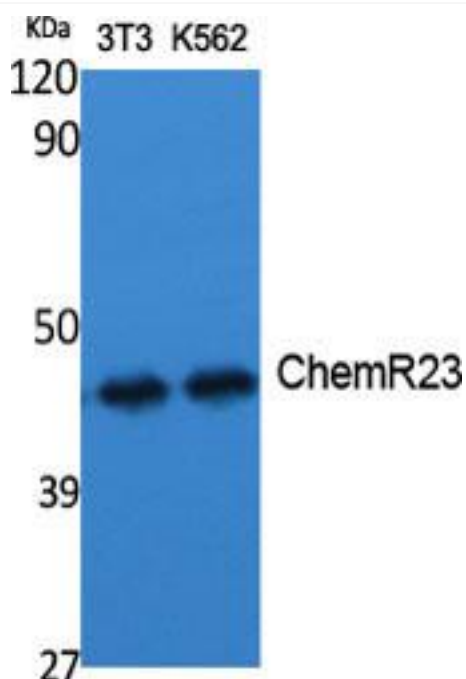
matters needing attention

Avoid repeated freezing and thawing!

Usage suggestions

This product can be used in immunological reaction related experiments. For more information, please consult technical personnel.

Products Images



Western Blot analysis of various cells using ChemR23 Monoclonal Antibody