



CD158f2 Monoclonal Antibody

Catalog No	YP-mAb-13171
Isotype	IgG
Reactivity	Human;Rat;Mouse;
Applications	WB
Gene Name	KIR2DL5B
Protein Name	Killer cell immunoglobulin-like receptor 2DL5B
Immunogen	The antiserum was produced against synthesized peptide derived from human KIR2DL5B. AA range:161-210
Specificity	CD158f2 Monoclonal Antibody detects endogenous levels of CD158f2 protein.
Formulation	Liquid in PBS containing 50% glycerol, 0.5% BSA and 0.02% sodium azide.
Source	Monoclonal, Mouse,IgG
Purification	The antibody was affinity-purified from mouse antiserum by affinity-chromatography using epitope-specific immunogen.
Dilution	WB 1:500-1:2000
Concentration	1 mg/ml
Purity	≥90%
Storage Stability	-20°C/1 year
Synonyms	KIR2DL5B; CD158F; CD158F2; KIR2DL5; KIR2DLX; Killer cell immunoglobulin-like receptor 2DL5B; CD158 antigen-like family member F2; Killer cell immunoglobulin-like receptor 2DLX; CD antigen CD158f2
Observed Band	40kD
Cell Pathway	Cell membrane; Single-pass type I membrane protein.
Tissue Specificity	
Function	function:Receptor on natural killer (NK) cells for HLA-C alleles. Inhibits the activity of NK cells thus preventing cell lysis.,similarity:Belongs to the immunoglobulin superfamily.,similarity:Contains 2 Ig-like C2-type (immunoglobulin-like) domains.,
Background	killer cell immunoglobulin like receptor, two Ig domains and long cytoplasmic tail 5B(KIR2DL5B) Homo sapiens Killer cell immunoglobulin-like receptors (KIRs) are transmembrane glycoproteins expressed by natural killer cells and subsets of T cells. The KIR genes are polymorphic and highly homologous and they are found in a cluster on chromosome 19q13.4 within the 1 Mb leukocyte receptor complex (LRC). The gene content of the KIR gene cluster varies among haplotypes, although several "framework" genes are found in all haplotypes (KIR3DL3, KIR3DP1, KIR3DL4, KIR3DL2). The KIR proteins are classified by the number of extracellular immunoglobulin domains (2D or 3D) and



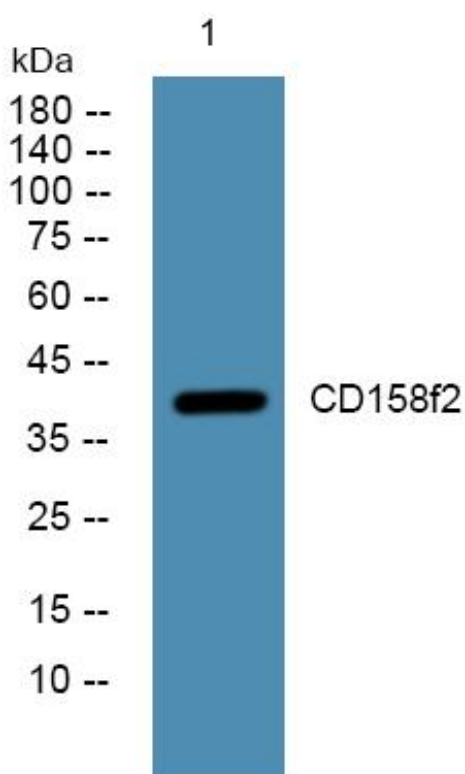
by whether they have a long (L) or short (S) cytoplasmic domain. KIR proteins with the long cytoplasmic domain transduce inhibitory signals upon ligand binding via an immune tyrosine-based inhibitory motif (ITIM), while KIR proteins with the short cytoplasmic domain lack the

matters needing attention

Avoid repeated freezing and thawing!

Usage suggestions

This product can be used in immunological reaction related experiments. For more information, please consult technical personnel.

Products Images

Western Blot analysis of various cells using CD158f2 Monoclonal Antibody