



CCRL1 Monoclonal Antibody

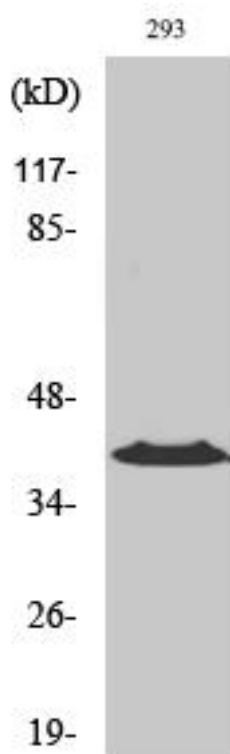
Catalog No	YP-mAb-13167
Isotype	IgG
Reactivity	Human;Mouse
Applications	WB
Gene Name	CCRL1
Protein Name	C-C chemokine receptor type 11
Immunogen	The antiserum was produced against synthesized peptide derived from human CCRL1. AA range:5-54
Specificity	CCRL1 Monoclonal Antibody detects endogenous levels of CCRL1 protein.
Formulation	Liquid in PBS containing 50% glycerol, 0.5% BSA and 0.02% sodium azide.
Source	Monoclonal, Mouse,IgG
Purification	The antibody was affinity-purified from mouse antiserum by affinity-chromatography using epitope-specific immunogen.
Dilution	WB 1:500-1:2000
Concentration	1 mg/ml
Purity	≥90%
Storage Stability	-20°C/1 year
Synonyms	CCRL1; CCBP2; CCR11; VSHK1; C-C chemokine receptor type 11; C-C CKR-11; CC-CKR-11; CCR-11; CC chemokine receptor-like 1; CCRL1; CCX CKR
Observed Band	40kD
Cell Pathway	Early endosome . Recycling endosome . Cell membrane ; Multi-pass membrane protein . Predominantly localizes to endocytic vesicles, and upon stimulation by the ligand is internalized via caveolae. Once internalized, the ligand dissociates from the receptor, and is targeted to degradation while the receptor is recycled back to the cell membrane.
Tissue Specificity	Predominantly expressed in heart. Lower expression in lung, pancreas, spleen, colon, skeletal muscle and small intestine.
Function	function:Receptor for CCL2, CCL8, CCL13, CCL19, CCL21 and CCL25.;similarity:Belongs to the G-protein coupled receptor 1 family.;tissue specificity:Predominantly expressed in heart. Lower expression in lung, pancreas, spleen, colon, skeletal muscle and small intestine.,
Background	The protein encoded by this gene is a member of the G protein-coupled receptor family, and is a receptor for C-C type chemokines. This receptor has been shown to bind dendritic cell- and T cell-activated chemokines including CCL19/ELC, CCL21/SLC, and CCL25/TECK. A pseudogene of this gene is found on chromosome 6. Alternatively spliced transcript variants encoding the same protein have been described. [provided by RefSeq, Jul 2013],

**matters needing attention**

Avoid repeated freezing and thawing!

Usage suggestions

This product can be used in immunological reaction related experiments. For more information, please consult technical personnel.

Products Images

Western Blot analysis of various cells using CCRL1 Monoclonal Antibody