

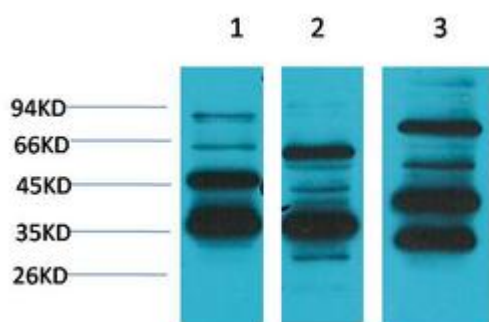


# Mas1 Monoclonal Antibody

<b>Catalog No</b>	YP-mAb-12963
<b>Isotype</b>	IgG
<b>Reactivity</b>	Human;Mouse;Rat
<b>Applications</b>	WB
<b>Gene Name</b>	MAS1
<b>Protein Name</b>	Proto-oncogene Mas
<b>Immunogen</b>	Synthetic Peptide of Mas1
<b>Specificity</b>	The antibody detects endogenous Mas1 protein.
<b>Formulation</b>	PBS, pH 7.4, containing 0.5%BSA, 0.02% sodium azide as Preservative and 50% Glycerol.
<b>Source</b>	Monoclonal, Mouse,IgG
<b>Purification</b>	The antibody was affinity-purified from mouse antiserum by affinity-chromatography using epitope-specific immunogen.
<b>Dilution</b>	WB 1:500-1:2000
<b>Concentration</b>	1 mg/ml
<b>Purity</b>	≥90%
<b>Storage Stability</b>	-20°C/1 year
<b>Synonyms</b>	MAS1; MAS; Proto-oncogene Mas
<b>Observed Band</b>	36-50kD
<b>Cell Pathway</b>	Cell membrane ; Multi-pass membrane protein .
<b>Tissue Specificity</b>	
<b>Function</b>	caution:Was originally (PubMed:3419518) thought to be a receptor for angiotensin II.,disease:The MAS oncogene has a weak focus-inducing activity in transfected NIH 3T3 cells.,similarity:Belongs to the G-protein coupled receptor 1 family.,
<b>Background</b>	This gene encodes a class I seven-transmembrane G-protein-coupled receptor. The encoded protein is a receptor for angiotensin-(1-7) and preferentially couples to the Gq protein, activating the phospholipase C signaling pathway. The encoded protein may play a role in multiple processes including hypotension, smooth muscle relaxation and cardioprotection by mediating the effects of angiotensin-(1-7). [provided by RefSeq, May 2012],
<b>matters needing attention</b>	Avoid repeated freezing and thawing!

**Usage suggestions**

This product can be used in immunological reaction related experiments. For more information, please consult technical personnel.

**Products Images**

Western Blot analysis of various cells using Mas1 Monoclonal Antibody