



# PSP Monoclonal Antibody

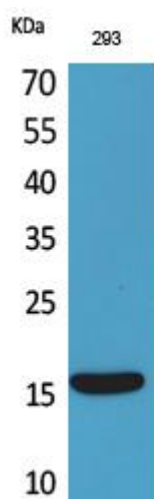
<b>Catalog No</b>	YP-mAb-12856
<b>Isotype</b>	IgG
<b>Reactivity</b>	Human;Rat;Mouse;
<b>Applications</b>	WB
<b>Gene Name</b>	PSPN
<b>Protein Name</b>	Persephin
<b>Immunogen</b>	The antiserum was produced against synthesized peptide derived from the C-terminal region of human PSPN. AA range:101-150
<b>Specificity</b>	PSP Monoclonal Antibody detects endogenous levels of PSP protein.
<b>Formulation</b>	Liquid in PBS containing 50% glycerol, 0.5% BSA and 0.02% sodium azide.
<b>Source</b>	Monoclonal, Mouse,IgG
<b>Purification</b>	The antibody was affinity-purified from mouse antiserum by affinity-chromatography using epitope-specific immunogen.
<b>Dilution</b>	WB 1:500-1:2000
<b>Concentration</b>	1 mg/ml
<b>Purity</b>	≥90%
<b>Storage Stability</b>	-20°C/1 year
<b>Synonyms</b>	PSPN; Persephin; PSP
<b>Observed Band</b>	16kD
<b>Cell Pathway</b>	Secreted.
<b>Tissue Specificity</b>	
<b>Function</b>	function:Exhibits neurotrophic activity on mesencephalic dopaminergic and motor neurons.,similarity:Belongs to the TGF-beta family. GDNF subfamily.,subunit:Homodimer; disulfide-linked.,
<b>Background</b>	persephin(PSPN) Homo sapiens This gene encodes a secreted ligand of the GDNF (glial cell line-derived neurotrophic factor) subfamily and TGF-beta (transforming growth factor-beta) superfamily of proteins. The encoded preproprotein is proteolytically processed to generate the mature protein. This protein signals through the RET receptor tyrosine kinase and a GPI-linked coreceptor, and promotes survival of neuronal populations. This protein may play a role in cell death, and nervous system development and function. Elevated expression of this gene has been observed in oral squamous cell carcinoma. [provided by RefSeq, Aug 2016],

**matters needing attention**

Avoid repeated freezing and thawing!

**Usage suggestions**

This product can be used in immunological reaction related experiments. For more information, please consult technical personnel.

**Products Images**

Western Blot analysis of various cells using PSP Monoclonal Antibody