

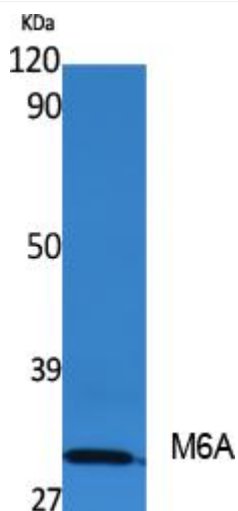


# M6A Monoclonal Antibody

|                                  |   |
|----------------------------------|---|
| <b>Catalog No</b>                | YP-mAb-12848  |
| <b>Isotype</b>                   | IgG   |
| <b>Reactivity</b>                | Human;Mouse;Rat   |
| <b>Applications</b>              | WB  |
| <b>Gene Name</b>                 | GPM6A   |
| <b>Protein Name</b>              | Neuronal membrane glycoprotein M6-a   |
| <b>Immunogen</b>                 | Synthesized peptide derived from M6A . at AA range: 140-220   |
| <b>Specificity</b>               | M6A Monoclonal Antibody detects endogenous levels of M6A protein.   |
| <b>Formulation</b>               | Liquid in PBS containing 50% glycerol, 0.5% BSA and 0.02% sodium azide.   |
| <b>Source</b>                    | Monoclonal, Mouse,IgG   |
| <b>Purification</b>              | The antibody was affinity-purified from mouse antiserum by affinity-chromatography using epitope-specific immunogen.  |
| <b>Dilution</b>                  | WB 1:500-1:2000   |
| <b>Concentration</b>             | 1 mg/ml   |
| <b>Purity</b>                    | ≥90%  |
| <b>Storage Stability</b>         | -20°C/1 year  |
| <b>Synonyms</b>                  | GPM6A; M6A; Neuronal membrane glycoprotein M6-a; M6a  |
| <b>Observed Band</b>             | 31kD  |
| <b>Cell Pathway</b>              | Cell membrane ; Multi-pass membrane protein . Cell projection, axon . Cell projection, growth cone . Cell projection, dendritic spine . Cell projection, filopodium . Cell projection, neuron projection . Localizes to cholesterol-rich lipid rafts of the plasma membrane of hippocampal neurons. Localized to plasma membrane of cell bodies and neurites of hippocampal neurons. Localized in membrane protrusions (filopodia and spines) of primary hippocampal neurons (By similarity). Localized to the growth cone edge membrane of elongating axons (By similarity). . |
| <b>Tissue Specificity</b>        | Brain,Brain cortex,Fetal brain,Spinal cord,   |
| <b>Function</b>                  | similarity:Belongs to the myelin proteolipid protein family.,   |
| <b>Background</b>                | similarity:Belongs to the myelin proteolipid protein family.,   |
| <b>matters needing attention</b> | Avoid repeated freezing and thawing!  |

**Usage suggestions**

This product can be used in immunological reaction related experiments. For more information, please consult technical personnel.

**Products Images**

Western Blot analysis of various cells using M6A Monoclonal Antibody