



# SR-3D Monoclonal Antibody

<b>Catalog No</b>	YP-mAb-12818
<b>Isotype</b>	IgG
<b>Reactivity</b>	Human;Rat;Mouse;
<b>Applications</b>	WB
<b>Gene Name</b>	HTR3D
<b>Protein Name</b>	5-hydroxytryptamine receptor 3D
<b>Immunogen</b>	Synthesized peptide derived from SR-3D . at AA range: 10-90
<b>Specificity</b>	SR-3D Monoclonal Antibody detects endogenous levels of SR-3D protein.
<b>Formulation</b>	Liquid in PBS containing 50% glycerol, 0.5% BSA and 0.02% sodium azide.
<b>Source</b>	Monoclonal, Mouse,IgG
<b>Purification</b>	The antibody was affinity-purified from mouse antiserum by affinity-chromatography using epitope-specific immunogen.
<b>Dilution</b>	WB 1:500-1:2000
<b>Concentration</b>	1 mg/ml
<b>Purity</b>	≥90%
<b>Storage Stability</b>	-20°C/1 year
<b>Synonyms</b>	HTR3D; 5-hydroxytryptamine receptor 3D; 5-HT3-D; 5-HT3D; Serotonin receptor 3D
<b>Observed Band</b>	50kD
<b>Cell Pathway</b>	Cell membrane ; Multi-pass membrane protein . Presumably retained within the endoplasmic reticulum unless complexed with HTR3A.
<b>Tissue Specificity</b>	Expressed in liver, as well as fetal and adult colon and kidney.
<b>Function</b>	function:This is one of the several different receptors for 5-hydroxytryptamine (serotonin), a biogenic hormone that functions as a neurotransmitter, a hormone, and a mitogen. This receptor is a ligand-gated ion channel, which when activated causes fast, depolarizing responses. It is a cation-specific, but otherwise relatively nonselective, ion channel.,similarity:Belongs to the ligand-gated ionic channel (TC 1.A.9) family.,subcellular location:Presumably retained within the endoplasmic reticulum unless complexed with HTR3A.,subunit:Forms a pentaheteromeric complex with HTR3A, homomeric complex being not functional.,tissue specificity:Expressed in liver, as well as fetal and adult colon and kidney.,
<b>Background</b>	The protein encoded this gene belongs to the ligand-gated ion channel receptor superfamily. This gene encodes subunit D of the type 3 receptor for 5-hydroxytryptamine (serotonin), a biogenic hormone that functions as a neurotransmitter, a mitogen and a hormone. This hormone has been linked to neuropsychiatric disorders, including anxiety, depression, and migraine. Serotonin



receptors causes fast and depolarizing responses in neurons following activation. The genes encoding subunits C, D and E of this type 3 receptor form a cluster on chromosome 3. Alternatively spliced transcript variants encoding different isoforms have been found for this gene. [provided by RefSeq, Jul 2009],

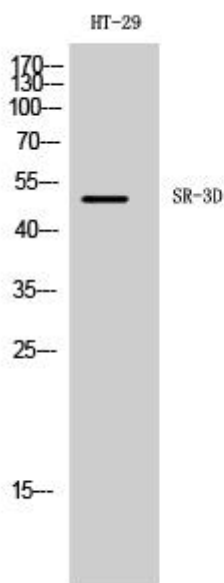
#### matters needing attention

Avoid repeated freezing and thawing!

#### Usage suggestions

This product can be used in immunological reaction related experiments. For more information, please consult technical personnel.

## Products Images



Western Blot analysis of various cells using SR-3D Monoclonal Antibody